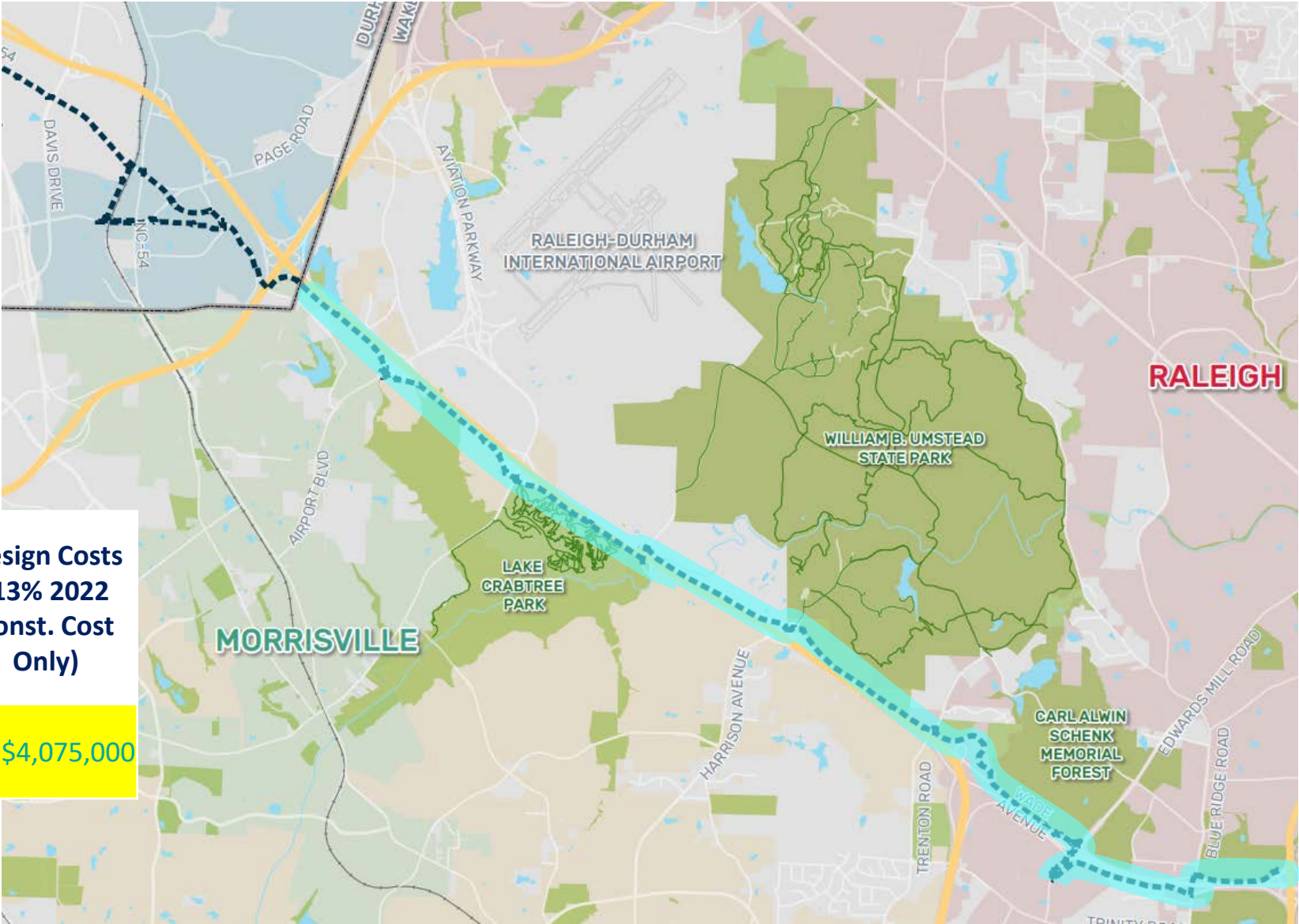


Conceptual Construction & Design Estimates – August 23, 2022



Wake County Base Section

- 10.25 Miles – I440 to County Line
- 12,545’ Boardwalk
- 3 Prefab Bridge Crossings of Streams
- 4 At-Grade Crossings
- Bridge over I-40 at Lake Crabtree
- Lighting



	2022 Const. Cost + 20% Contingency + CEI costs	2025 Const. Cost + 20% Contingency + CEI costs	Design Costs (13% 2022 Const. Cost Only)
Base – I-440 to County Line	\$41,378,000	\$45,215,000	\$4,075,000

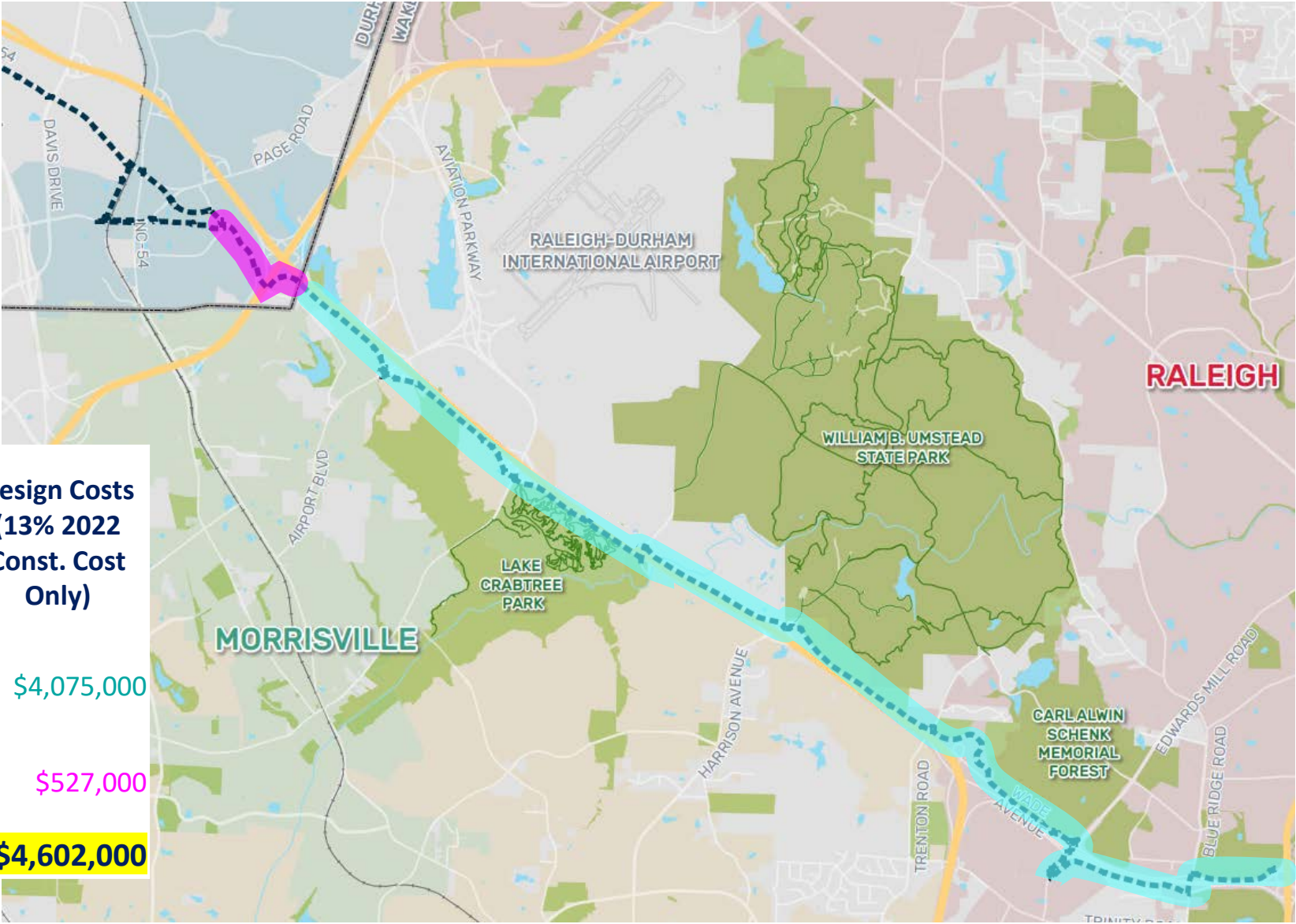
Connection to EXISTING Transit Station



1.92 Miles – County Line to existing
Transit Station at Emperor Drive

- 1255' Boardwalk
- 1 Bridge over I-540
- 1 Ped Bridge over Stream
- Lighting

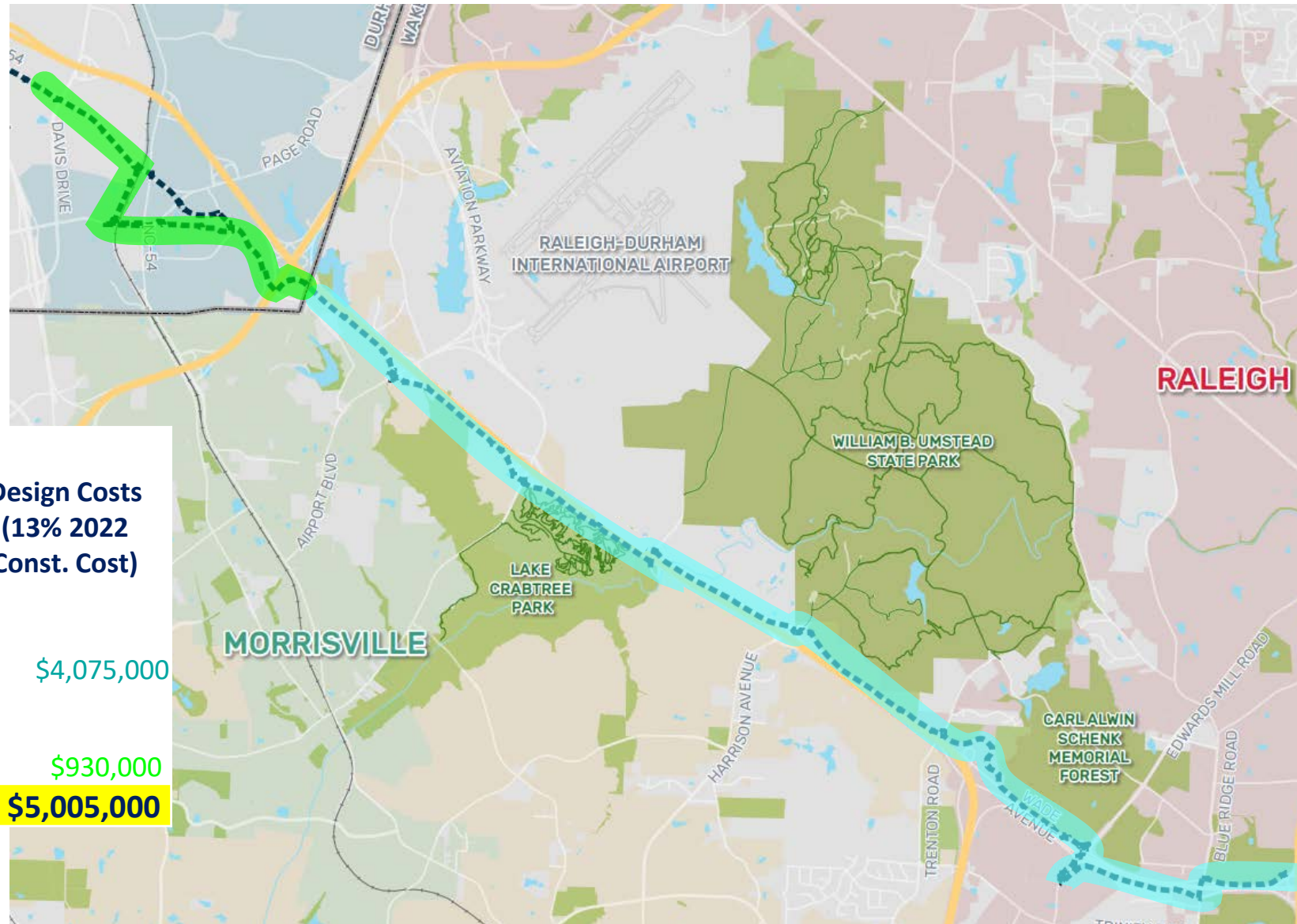
	2022 Const. Cost + 20% Contingency + CEI costs	2025 Const. Cost + 20% Contingency + CEI costs	Design Costs (13% 2022 Const. Cost Only)
Base – I-440 to County Line	\$41,378,000	\$45,215,000	\$4,075,000
County Line to Emperor Drive	\$5,346,000	\$5,842,000	\$527,000
Totals	\$46,724,000	\$51,057,000	\$4,602,000



Connection to NEW Transit Station

3.1 Miles – County Line to New
Regional Transit Station on Davis Dr.

665' Boardwalk
1 Bridge over I-540
Lighting



	2022 Const. Cost + 20% Contingency + CEI costs	2025 Const. Cost + 20% Contingency + CEI costs	Design Costs (13% 2022 Const. Cost)
Base – I-440 to County Line	\$41,378,000	\$45,215,000	\$4,075,000
County Line to Davis Drive	\$9,439,000	\$10,315,000	\$930,000
Totals	\$50,817,000	\$55,530,000	\$5,005,000

Design Phase Costs



Design Cost Estimate Includes:

- **NCDOT Control of Access Committee Approval Process**
- **Public Engagement**
 - Support of NEPA documentation
 - Input on connections, materials, access etc.
 - Property impact workshops + outreach
- **Design**
 - Topo + Boundary Survey
 - 30% Design Trenton to I-440
 - Alignment confirmation
 - Final Bikeway Design
 - Final Boardwalk, bridge and tunnel design
 - Final Signal design, signal modifications
 - ROW Acquisition (Negotiation Fees not Transaction Fees)
 - Permitting
- **Construction Cost Estimating**
- **Bidding**

Other Costs to be Included:

Environmental Documentation (CE)	\$100,000
Raise Grant Application (10+ Miles)	\$ 75,000

Should be added to all options

Exclusions:

- Construction Administration
- Construction Engineering Inspections

Other Design Phase Costs



- › Environmental Documentation (Categorical Exclusion) \$100,000
- › Raise Grant Application (10+ Miles) \$ 75,000

Should be added to all options

Estimate Summary



FEASIBILITY & IMPLEMENTATION STUDY

	2022 Const. Cost + 20% Contingency + CEI costs	2025 Const. Cost + 20% Contingency + CEI costs	Design Costs 13% 2022 Const. Cost	NEPA + Grant Pursuit	Total
Base – I-440 to County Line	\$41,378,000	\$45,215,000	\$4,075,000	\$175,000	\$4,250,000
I-440 to Existing Transit Station Emperor Drive	\$46,724,000	\$51,057,000	\$4,602,000	\$175,000	\$4,777,000
1-440 to New Transit Station Davis Drive	\$50,817,000	\$55,530,000	\$5,005,000	\$175,000	\$5,180,000

