



## U.S. 1 (Capital Blvd)

I-540 to Purnell/Harris Rd  
(U-5307 A,B,C & D)

### Tolling Options

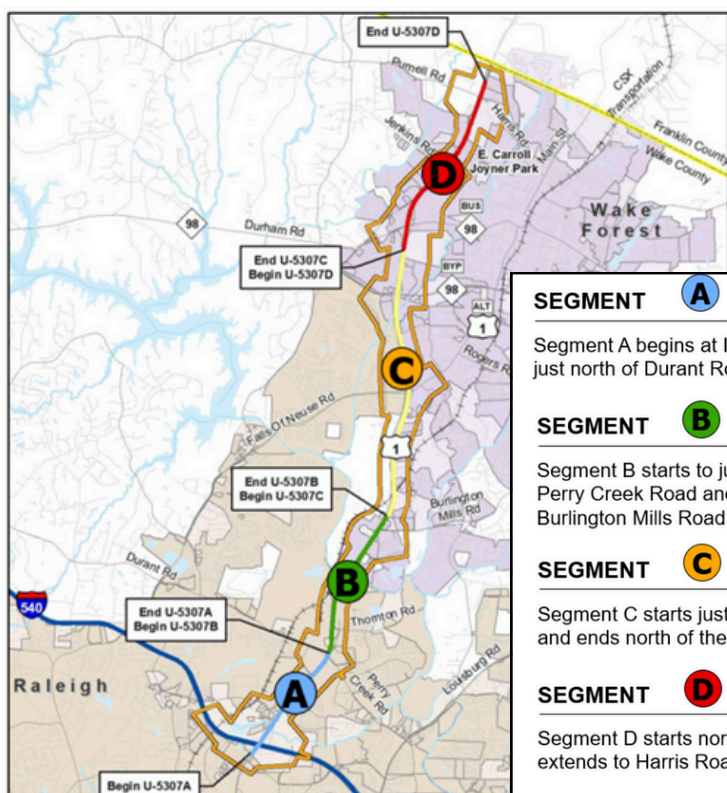


SCAN ME!

U.S. 1 is known for excessive road congestion and driving along it takes up substantial amount of time for residents and workers in the region. The Capital Area MPO (CAMPO), along with state and local partners, has pursued upgrading the Corridor to a freeway for several decades. The project has been repeatedly delayed and costs have escalated exponentially. To try to stabilize both the timeline and costs, CAMPO partnered with the N.C. Turnpike Authority to investigate alternative and innovative methods to deliver this project.

Learn more about the Toll Study findings + share YOUR thoughts on the path forward:

[publicinput.com/US\\_1\\_TollingOptions](https://publicinput.com/US_1_TollingOptions)



#### SEGMENT **A**

Segment A begins at I-540 in Raleigh and extends to just north of Durant Road and Perry Creek Road.

#### SEGMENT **B**

Segment B starts to just north of Durant Road and Perry Creek Road and extends to just north of Burlington Mills Road.

#### SEGMENT **C**

Segment C starts just north of Burlington Mills Road and ends north of the N.C. 98 Bypass

#### SEGMENT **D**

Segment D starts north of the N.C. 98 Bypass and extends to Harris Road/Purnell Road in Wake Forest

### Your Input Matters!

#### Drop-In Public Info Sessions

**April 30**  
**5-7 PM**

**Abbotts Creek  
Community Center**  
9950 Durant Rd  
Raleigh, NC 27614

**May 5**  
**5-7 PM**

**Wake Forest  
Renaissance Center**  
405 Brooks St  
Wake Forest, NC 27587

*Stop in to discuss the U.S. 1  
Corridor and tolling scenarios  
with CAMPO, NCDOT, and  
N.C. Turnpike Authority reps.*

Visit [publicinput.com/US\\_1\\_TollingOptions](https://publicinput.com/US_1_TollingOptions)

- Online Survey - Closes Weds., May 14th
- Project History, Challenges, Opportunities
- Toll Study Scenarios

