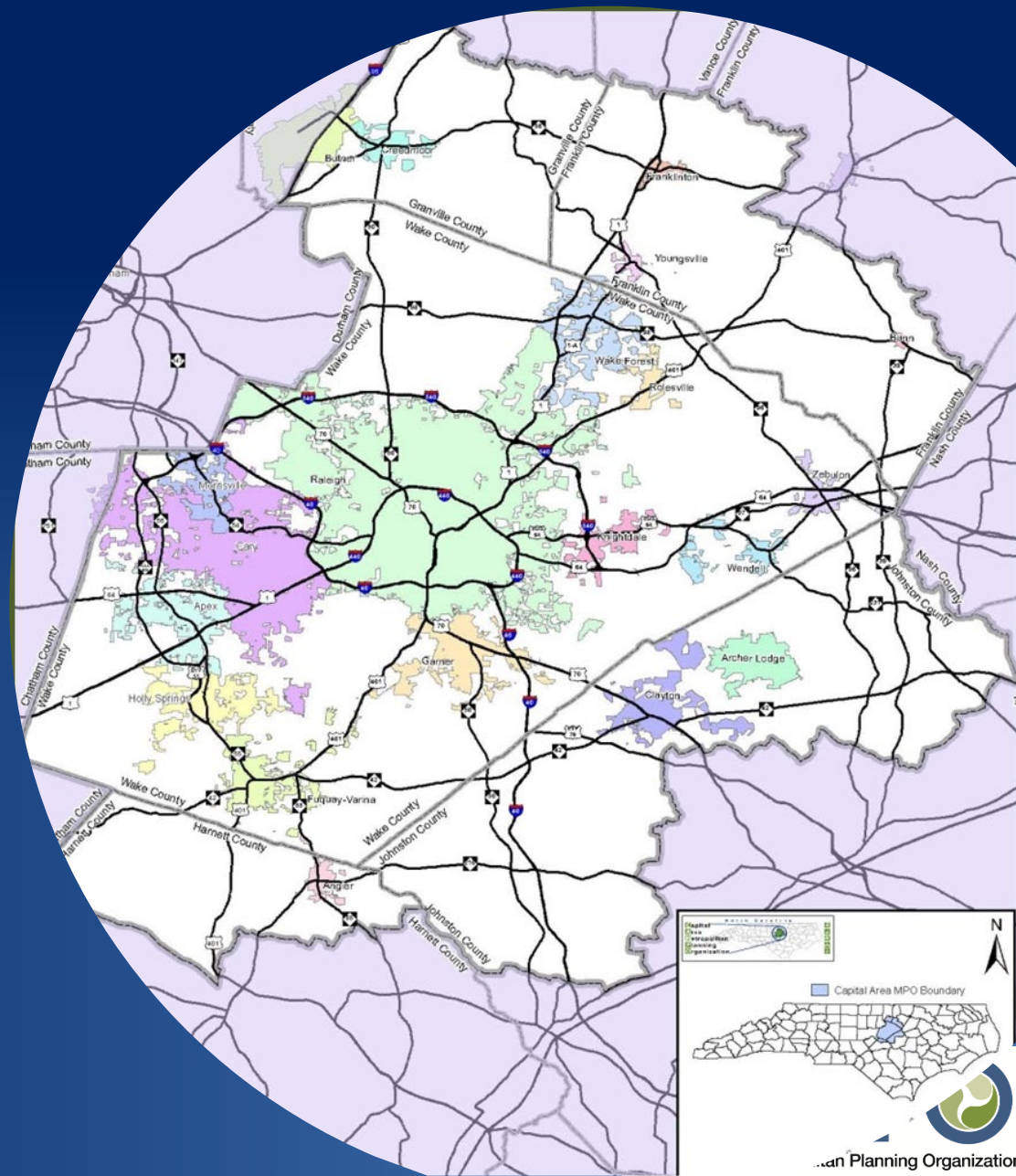


How are the MPO boundaries determined?

- Federal regulation
- Boundaries are reviewed every 10 years based on census
- Existing urbanized area plus 20-year forecast
- Requires changes to MPO governing documents

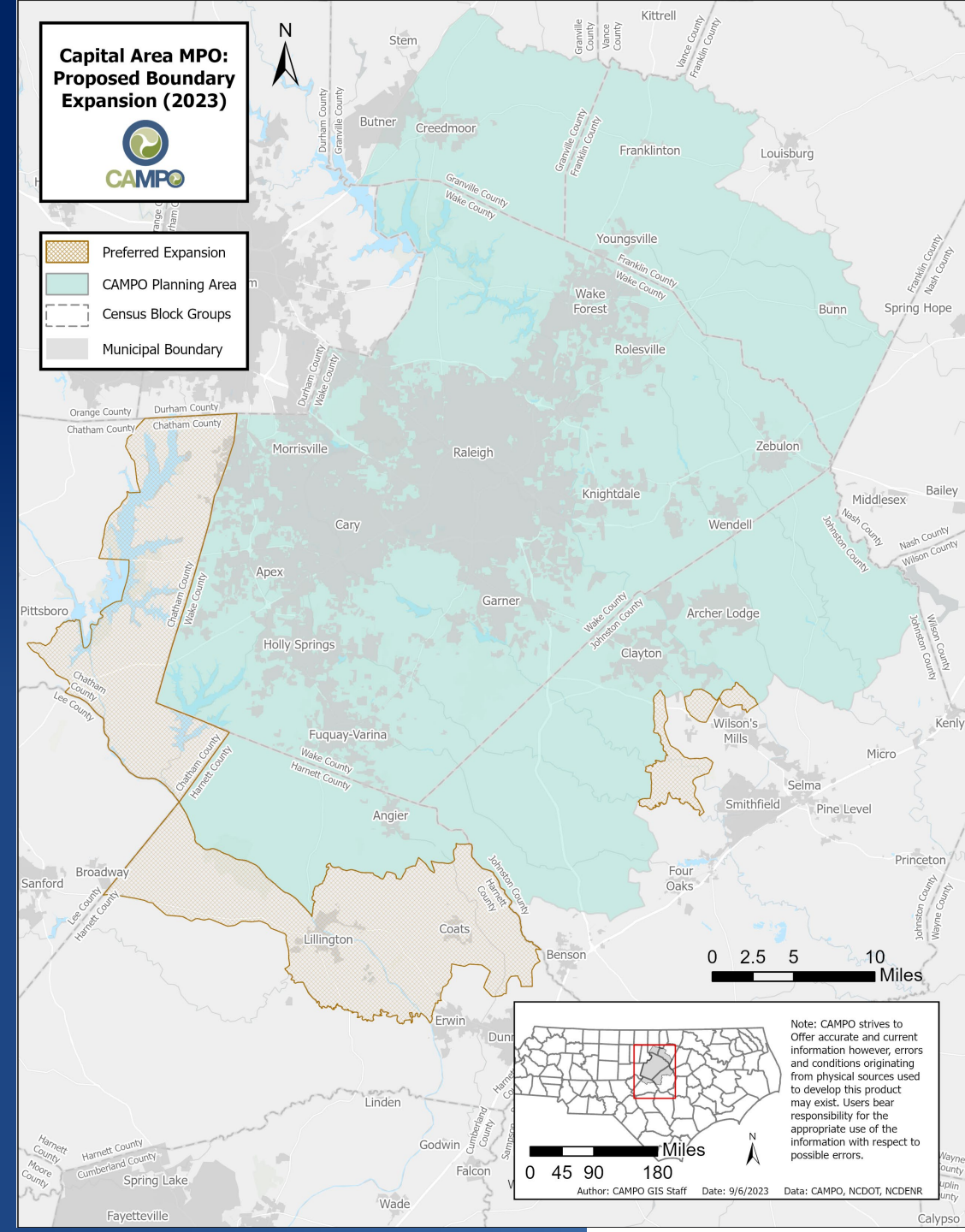
CFR 23. Section 450.312

1. *At a minimum, the MPA boundaries shall encompass the entire existing urbanized area (as defined by the Bureau of the Census) plus the contiguous area expected to become urbanized within a 20-year forecast period for the metropolitan transportation plan.*
2. *The MPA boundaries may be further expanded to encompass the entire metropolitan statistical area or combined statistical area, as defined by the Office of Management and Budget.*



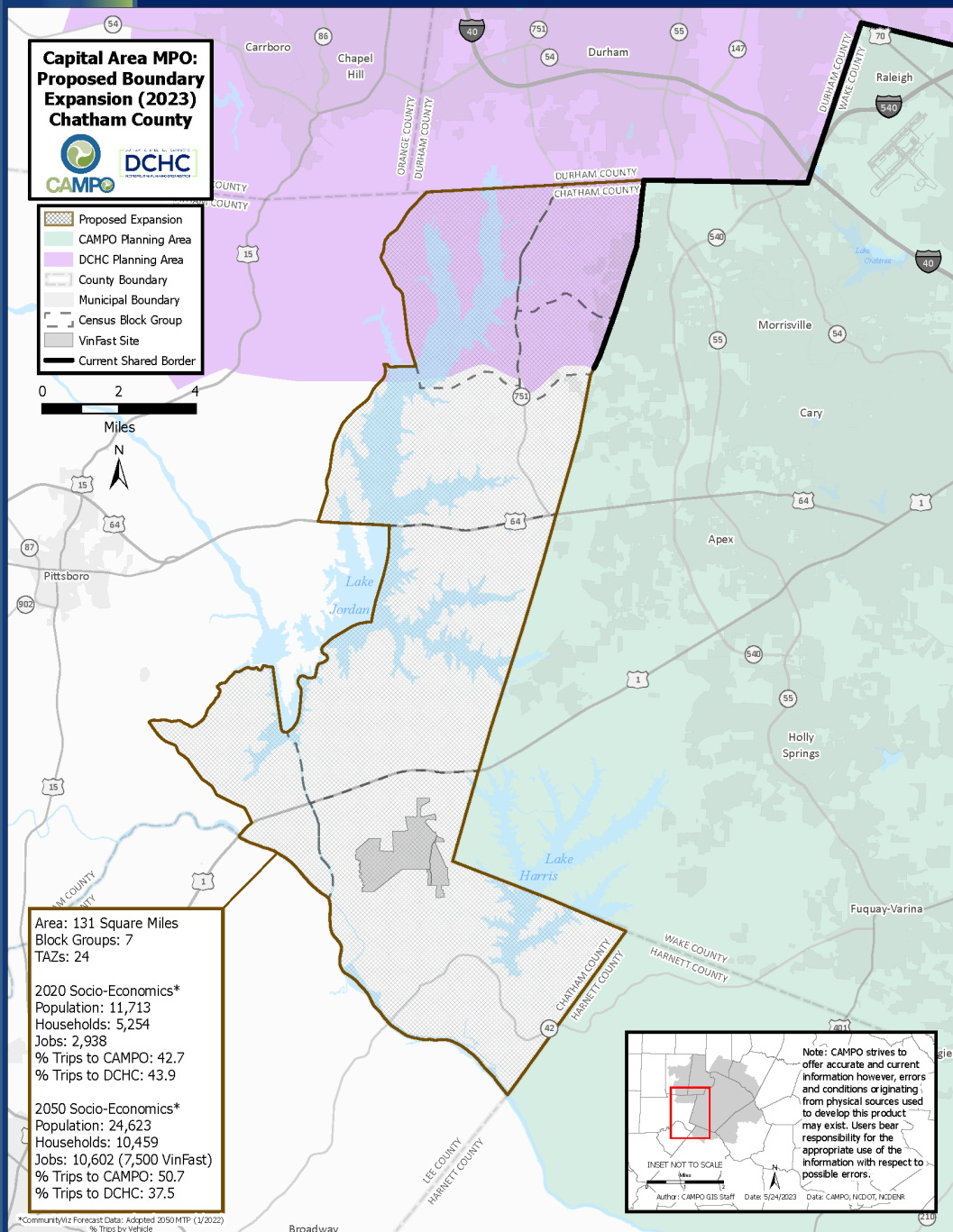
2020 CAMPO Boundary Changes?

- CAMPO has been evaluating potential changes to the MPO boundary based on the new urbanized area boundary, the 20 year growth forecast, and travelshed. Potential boundary changes include:
- Expansion in Chatham, Harnett, and Johnston Counties. These would include both required changes and voluntary additions to the MPO boundary.



CAMPO – Chatham County

- Growth in western Wake County has begun to expand into eastern Chatham County (Cary/Apex).
- Travel patterns are oriented towards CAMPO/Wake County
- Chatham County BOCC have voted to request membership for the areas highlighted (06/20/23).
- Potential boundary change includes Chatham County east of Lake Jordan.
 - Cary and Apex growth areas
 - Moncure area
 - Triangle Innovation Point megasite area

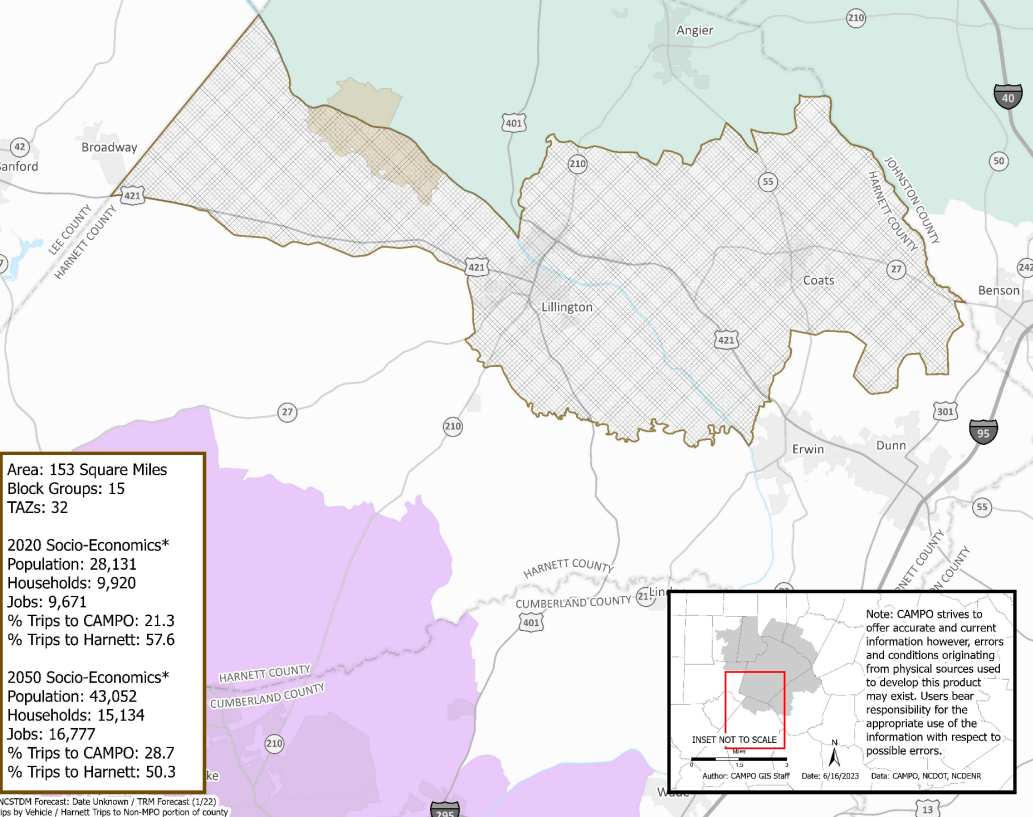


**Capital Area MPO:
Proposed Boundary
Expansion (2023)
Harnett Scenario**



Proposed Expansion
 CAMPO Planning Area
 FAMPO Planning Area
 County Boundary
 Municipal Boundary
 Raven Rock State Park

0 2.5 5
Miles

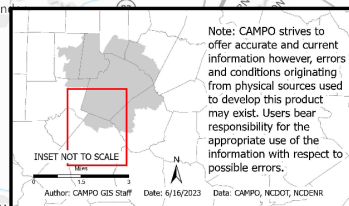


Area: 153 Square Miles
 Block Groups: 15
 TAZs: 32

2020 Socio-Economics*
 Population: 28,131
 Households: 9,920
 Jobs: 9,671
 % Trips to CAMPO: 21.3
 % Trips to Harnett: 57.6

2050 Socio-Economics*
 Population: 43,052
 Households: 15,134
 Jobs: 16,777
 % Trips to CAMPO: 28.7
 % Trips to Harnett: 50.3

*NCSDM Forecast: Date Unknown / TRM Forecast: 1/22
 % Trips by Vehicle / Harnett Trips to Non-MPO portion of county



Note: CAMPO strives to offer accurate and current information however, errors and conditions originating from physical sources used to develop this product may exist. Users bear responsibility for the appropriate use of the information with respect to possible errors.
 Author: CAMPO GIS Staff Date: 6/16/2023 Date: CAMPO, NCDOT, NCDENR

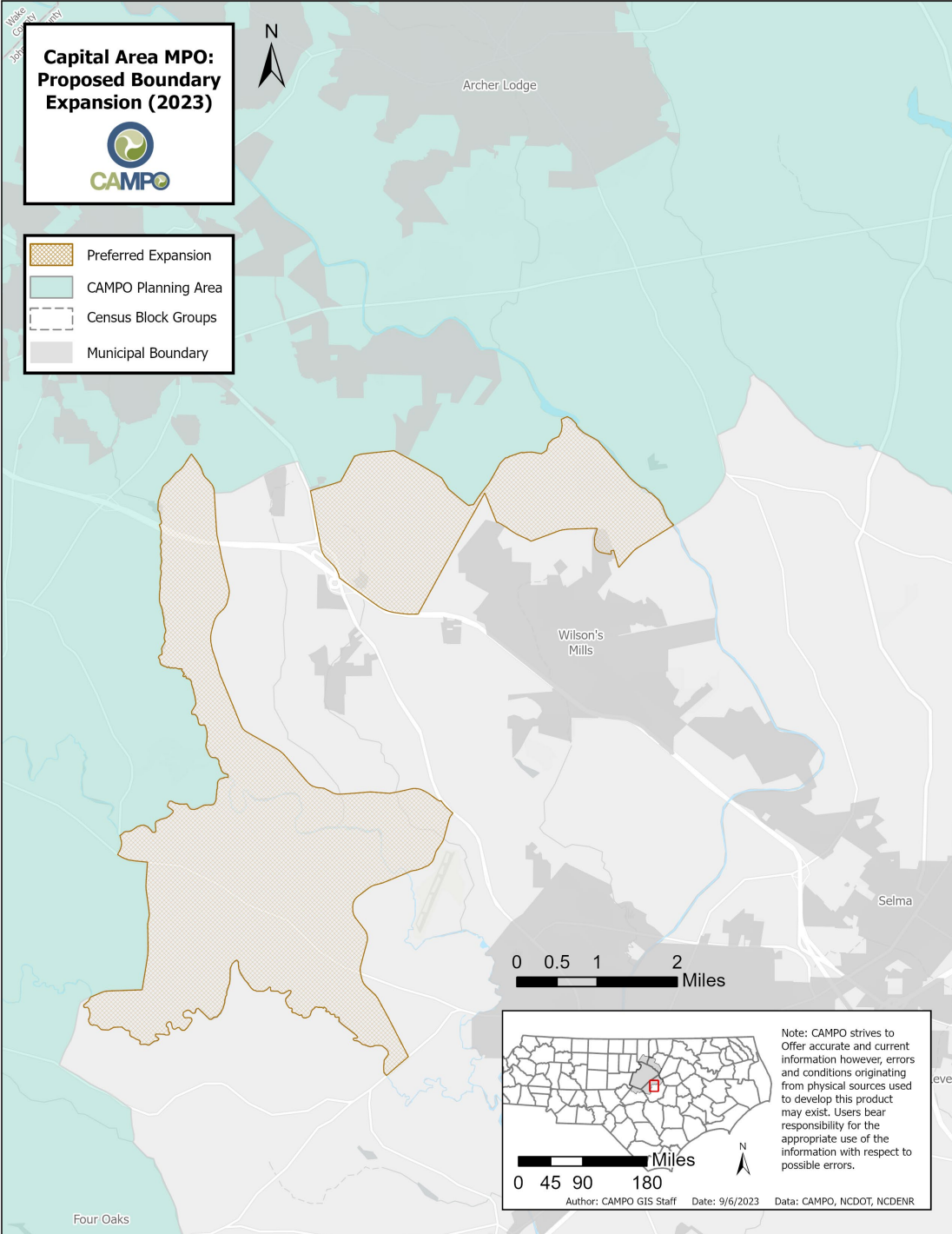
CAMPO – Harnett County

- Growth in southern Wake County has begun to expand into northern Harnett County.
- Travel patterns are oriented towards CAMPO/Wake County
- Potential boundary change includes additional areas in northern Harnett County.
 - Coats
 - Lillington

Capital Area MPO: Proposed Boundary Expansion (2023)



- Preferred Expansion
- CAMPO Planning Area
- Census Block Groups
- Municipal Boundary



CAMPO – Johnston County

- 2020 Census split Clayton/Archer Lodge into separate urbanized area.
- On June 19th, 2023, Johnston County BOCC decided to remain a part of CAMPO.
- Growth in western Johnston County continues along the US 70/Future I-42 corridor
- Travel patterns are oriented towards CAMPO / Wake County
- Potential boundary change includes additional areas in western Johnston County.
- Wilson's Mills declined to join CAMPO at this time, but a small portion is in the required area.