

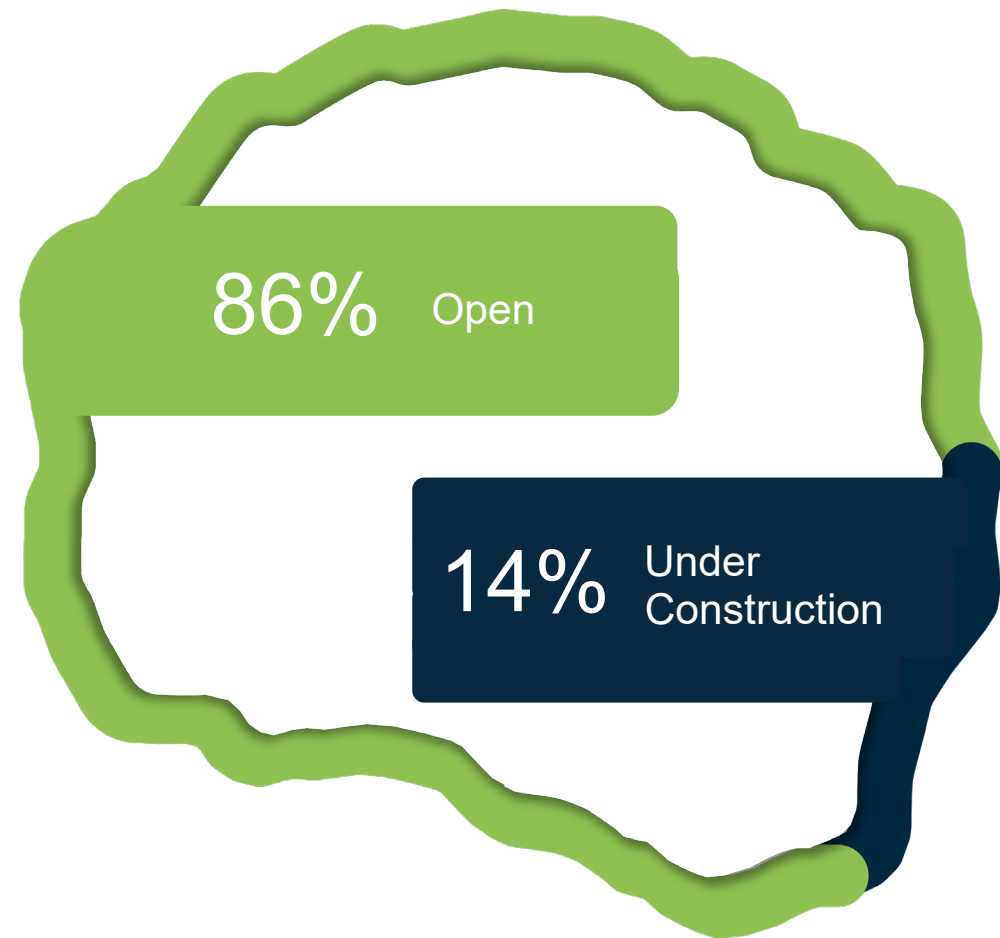


Complete 540 Phase 2

Alan Shapiro, P.E.

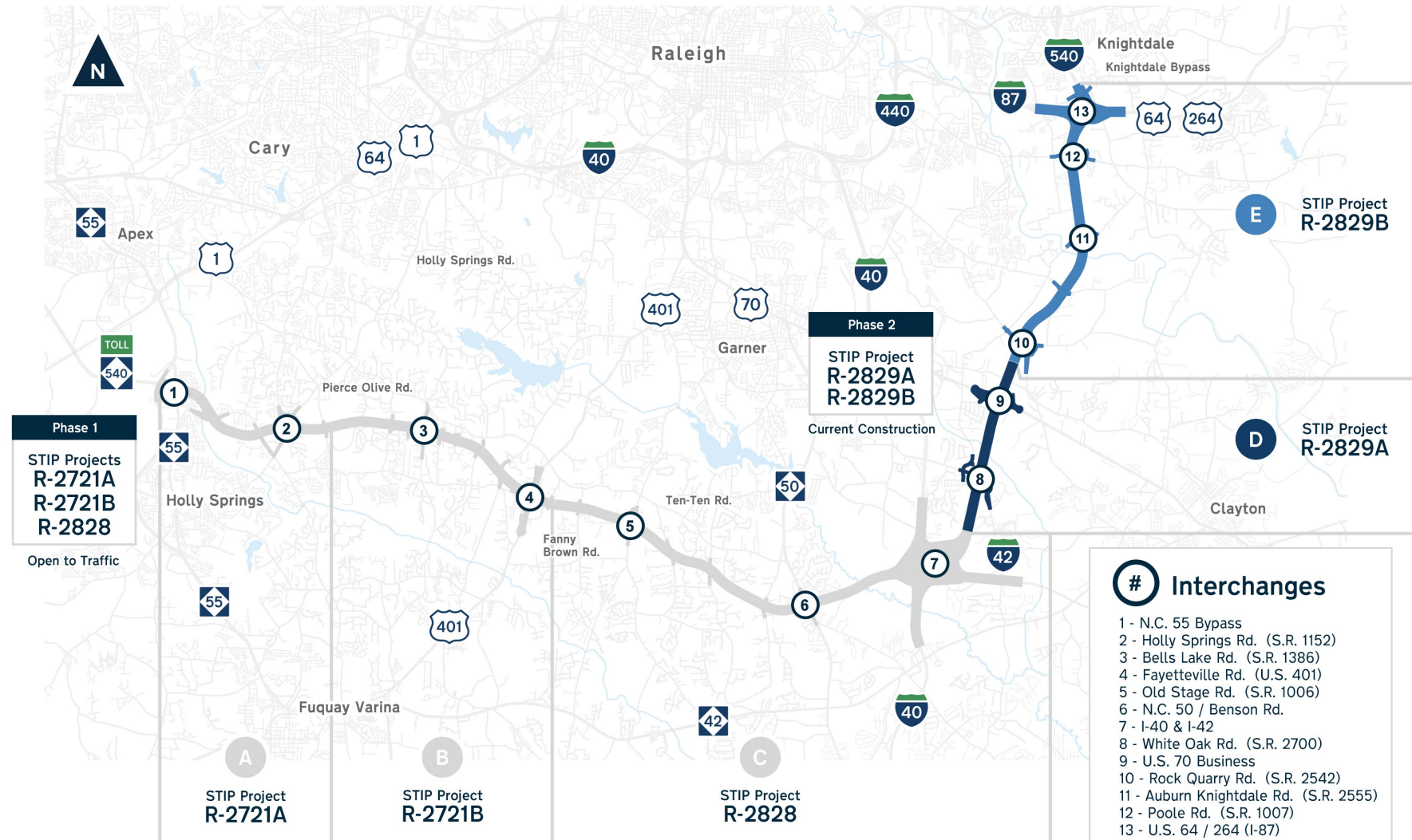
Completing the Loop

-  Open to traffic (66 miles)
I-540 & Triangle Expressway
-  Missing link (10 miles)
Eastern Wake Expressway



Complete 540 Phase 2

- D** R-2829A
4 miles
2 full interchanges + 1 partial
- E** R-2829B
6 miles
3 full interchanges + 1 partial



R-2829A



D

\$287.3M

Cost of Contract

74%

Parcels with
Access

R-2829B



E

\$449.9M

Cost of Contract

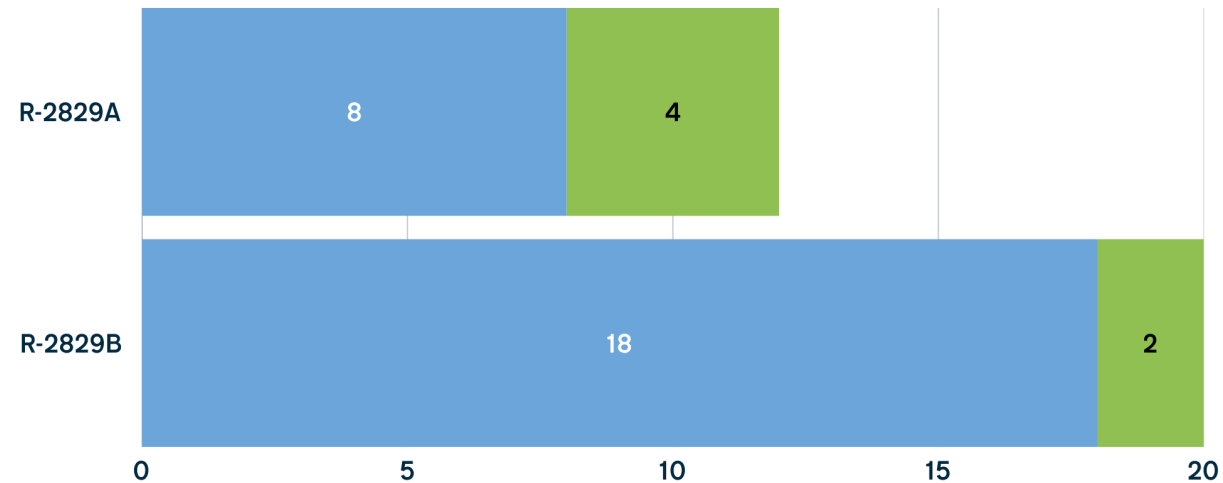
71%

Parcels with
Access

Bridge and Culvert Construction

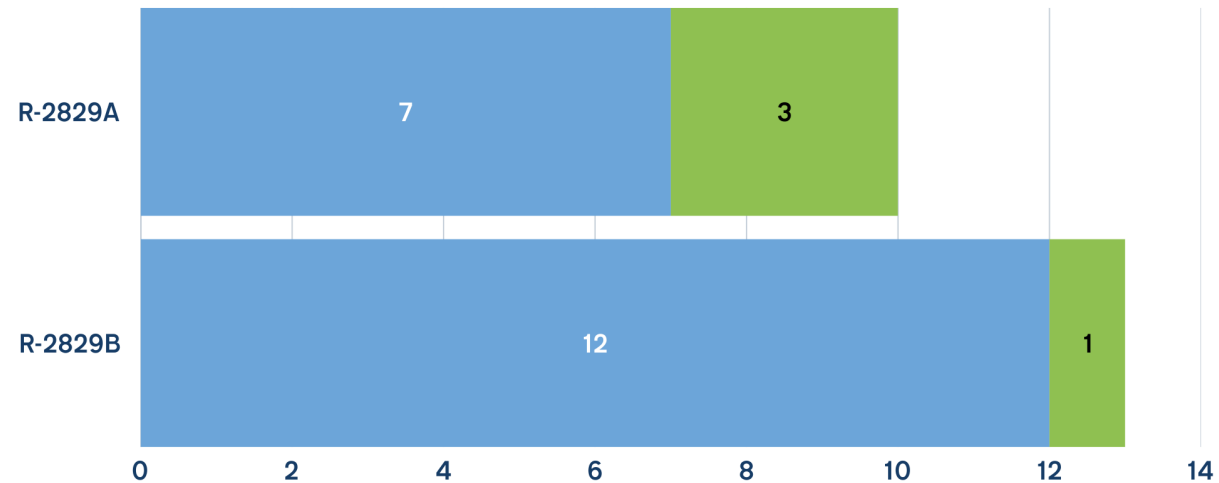
Bridge Construction

● Not Started ● Under Construction ● Complete

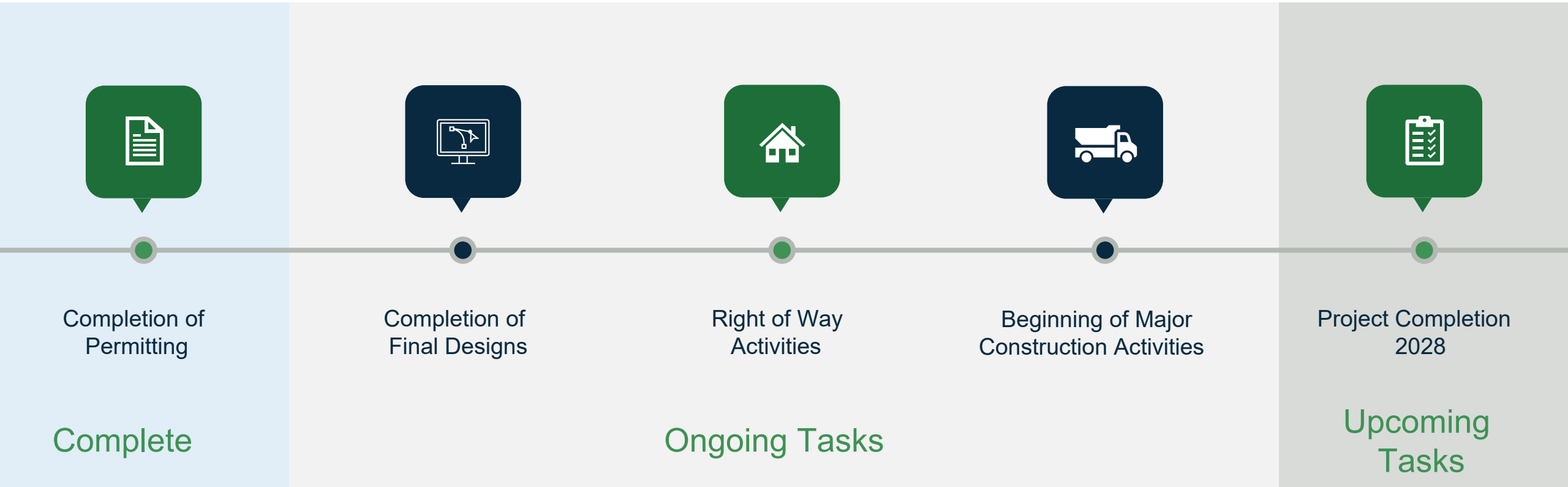


Culvert Construction

● Not Started ● Under Construction ● Complete

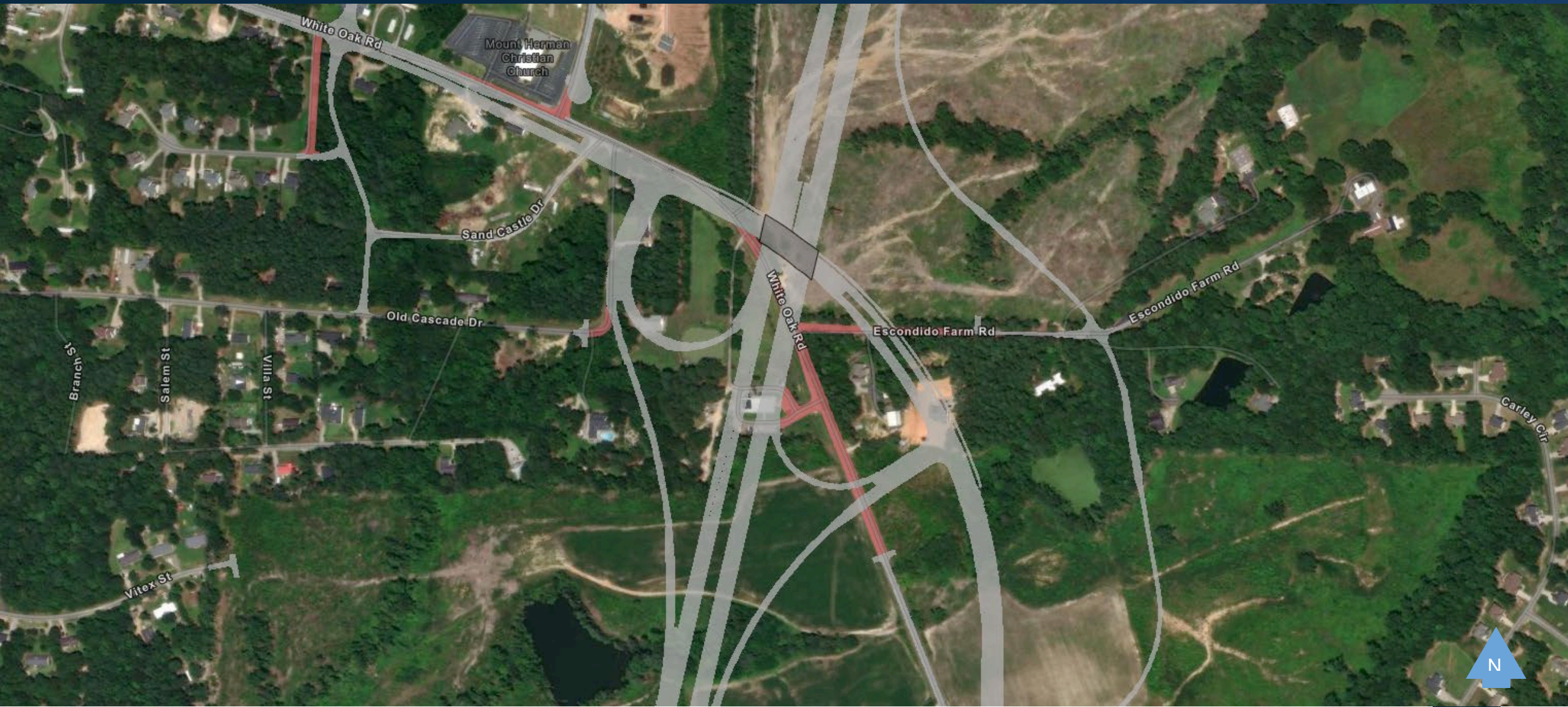


Anticipated Project Schedule

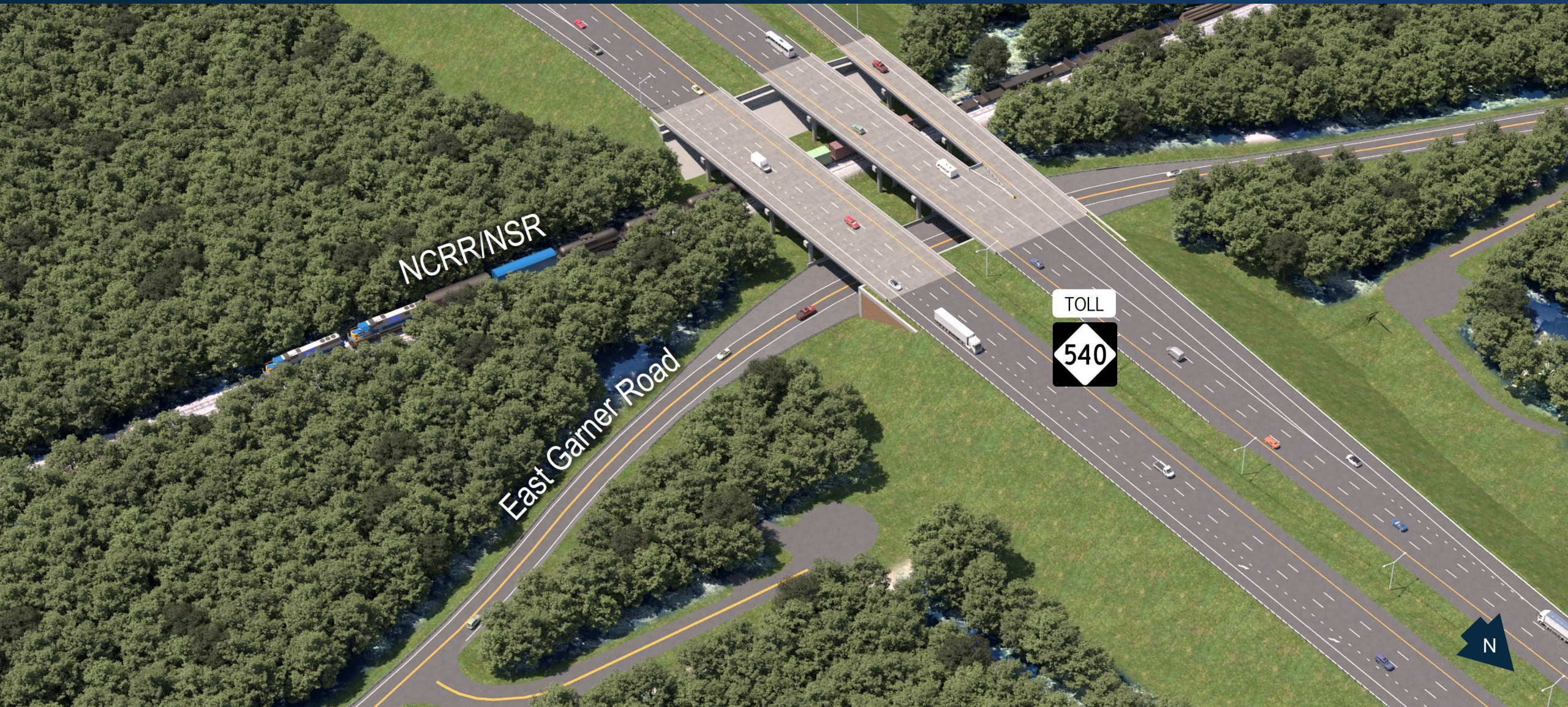


R-2829A Design Concepts

White Oak Road Interchange Design



East Garner Road Design



U.S. 70 Interchange Design

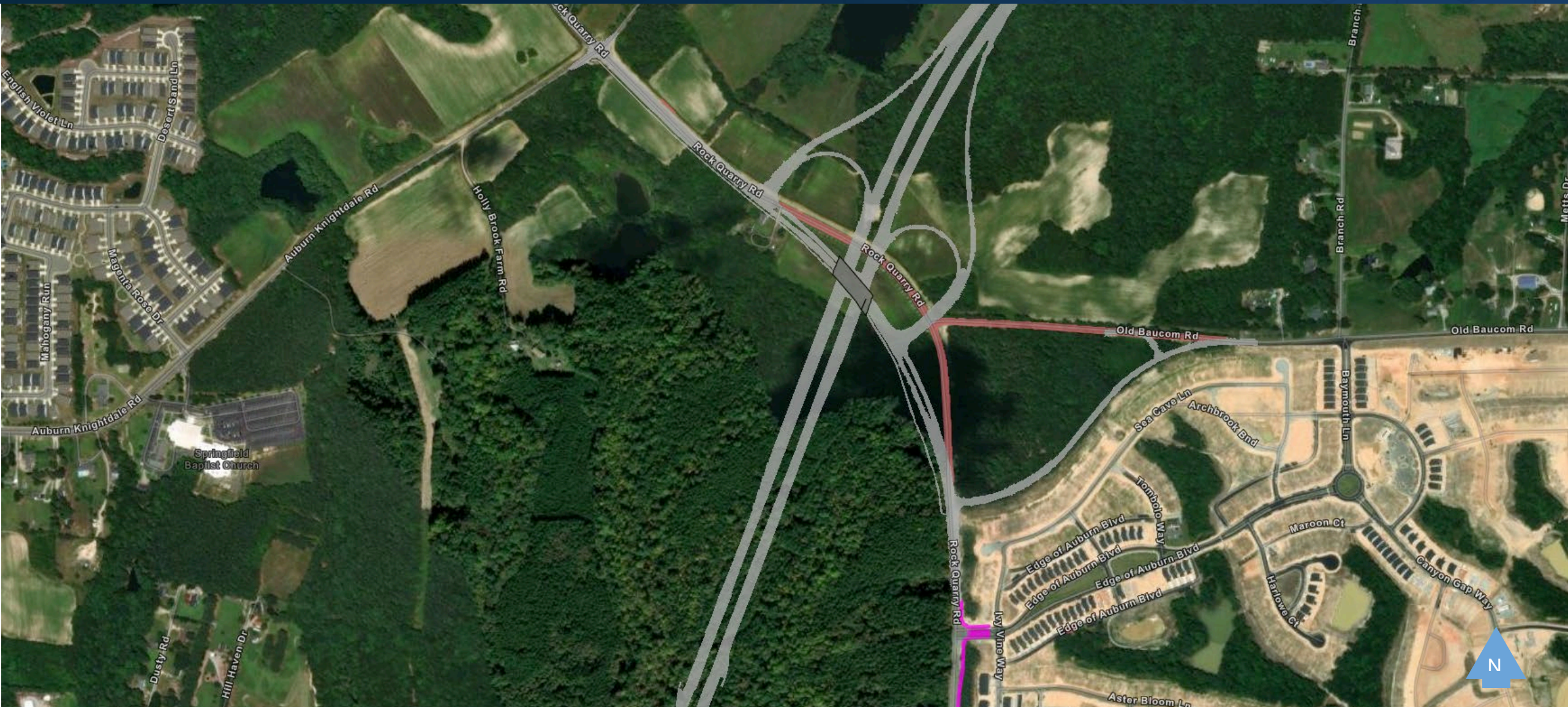


U.S. 70 Interchange Design

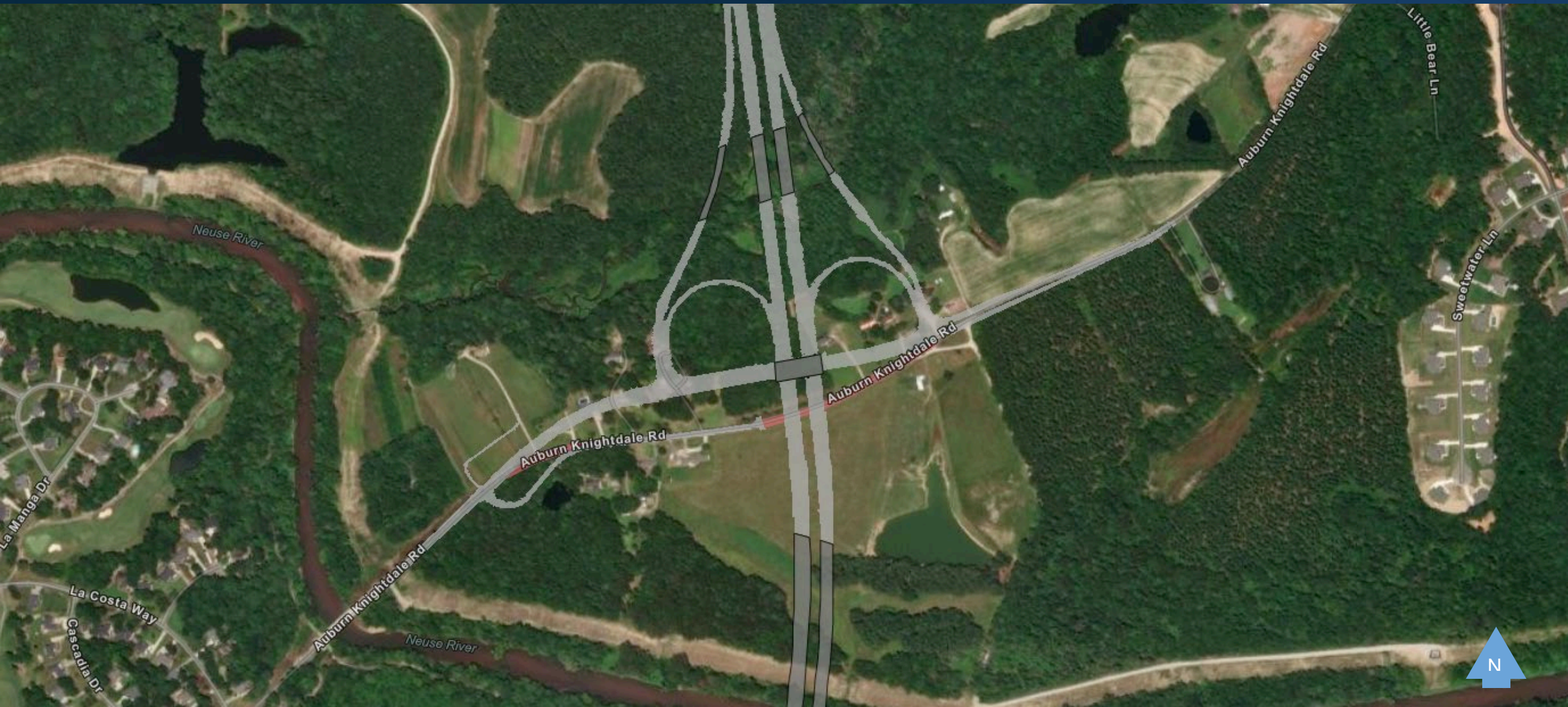


R-2829B Design Concepts

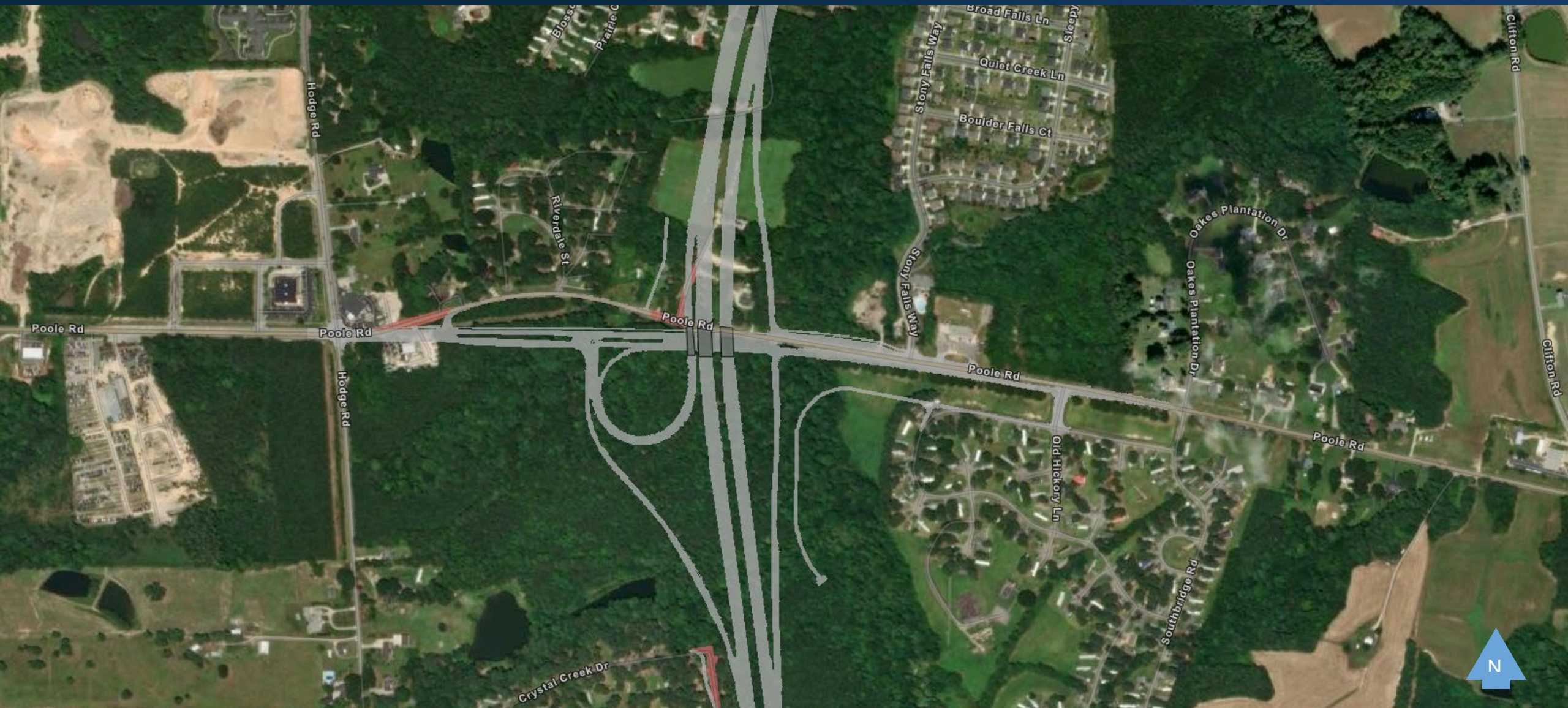
Rock Quarry Road Interchange Design



Auburn Knightdale Road Interchange Design



Poole Road Interchange Design



I-87 Interchange Design



Project Highlights

Completed
Turbine
Interchange
I-40 / I -42



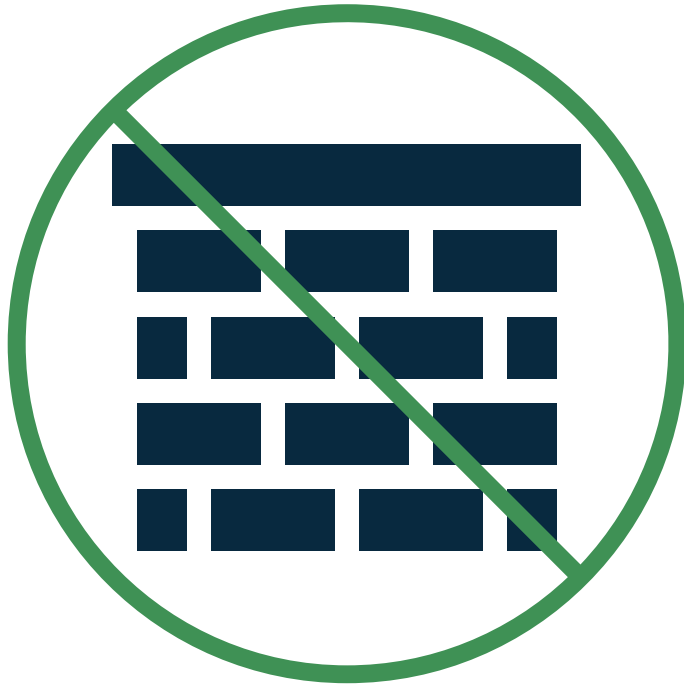
Completed
Turbine
Interchange
I-40 / I -42



Typical Toll Vault



Toll Technology Improvements



Eliminating Toll Vaults



Cost Savings

Toll Collection Loop Advancements



Loops are damaged frequently



Eliminating loops allows less impact to customers for maintenance activities

DBE Participation



Over \$30 million for committed
DBE participation

Gravesites

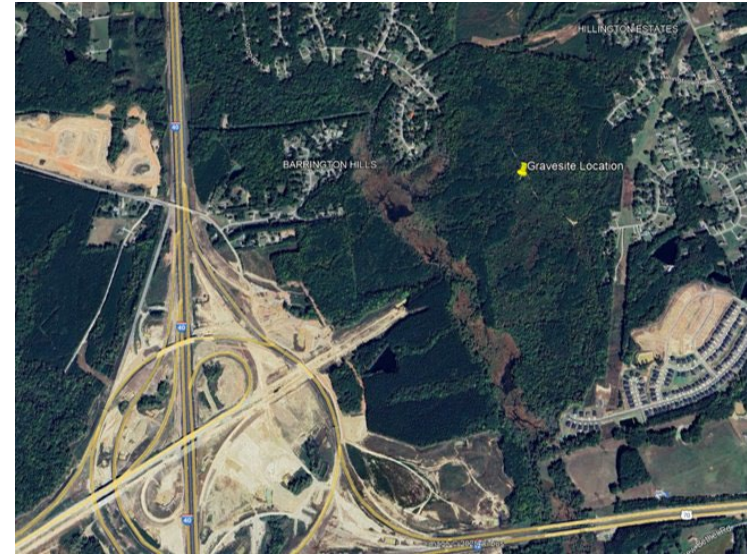
Avoidance

Poole Road



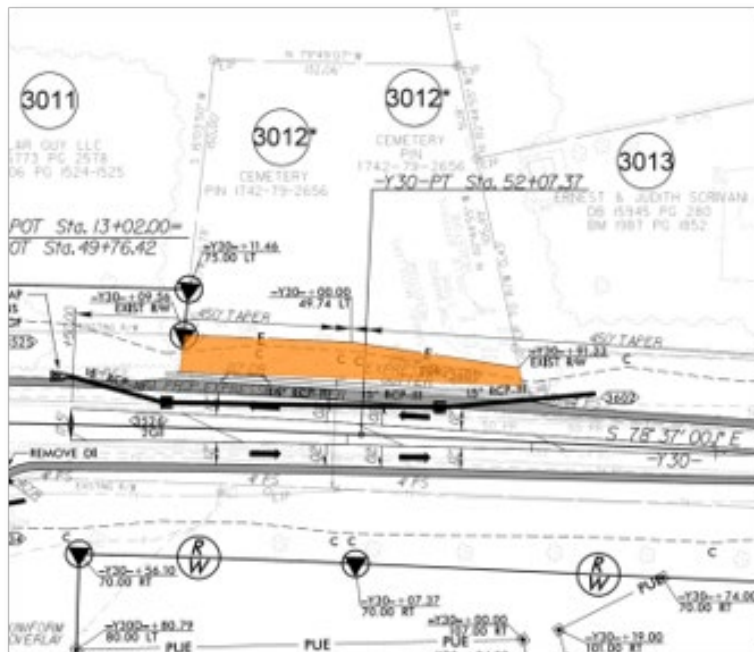
Relocation

Bushy Branch

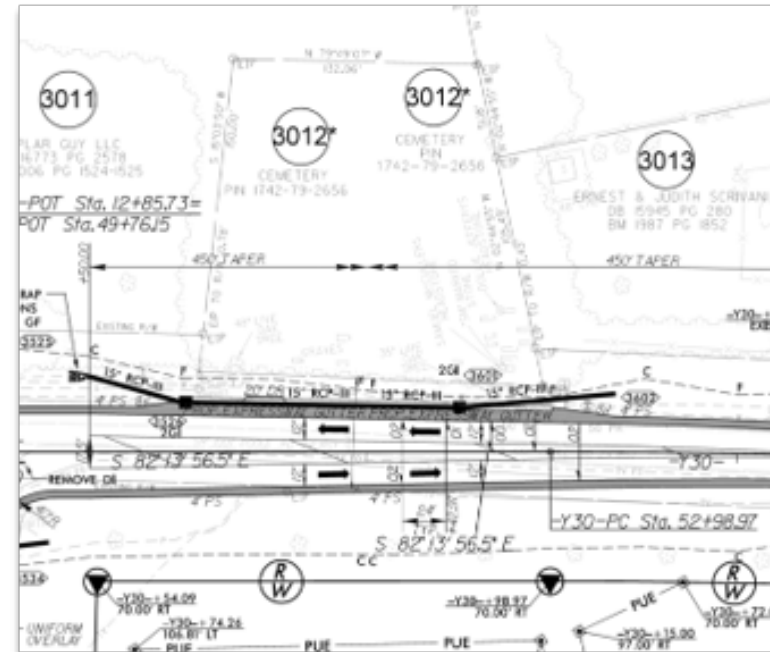


Gravesite Avoidance

June 2024 Design



Current Design



Gravesite Relocation



Gravesite Relocation



Neuse River Crossing

Neuse River Construction Activities



Building dual bridges for
Toll N.C. 540 to cross over
the Neuse River Greenway
Trail & Neuse River



Minimal relocation of
the Neuse River
Greenway Trail



Trail access will
remain open from
dawn to dusk daily



River & trail users
will be informed of
construction activities

Neuse River Safety Plan



Compliance



Site Specific Safety Plan



Annual Review



Monthly Inspection



Monitors/Flaggers

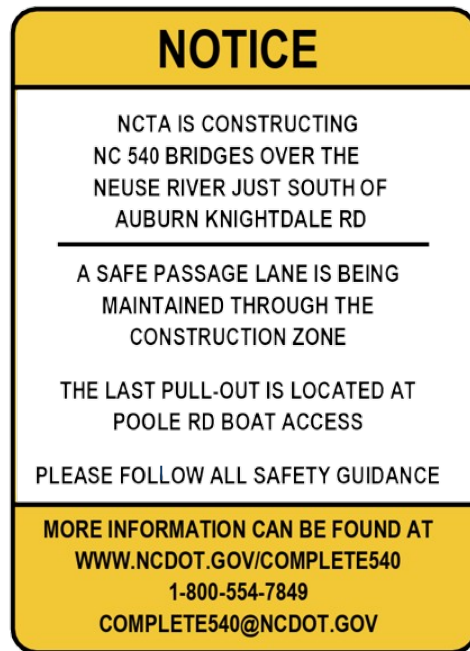


Overhead Operations



Storm Preparedness

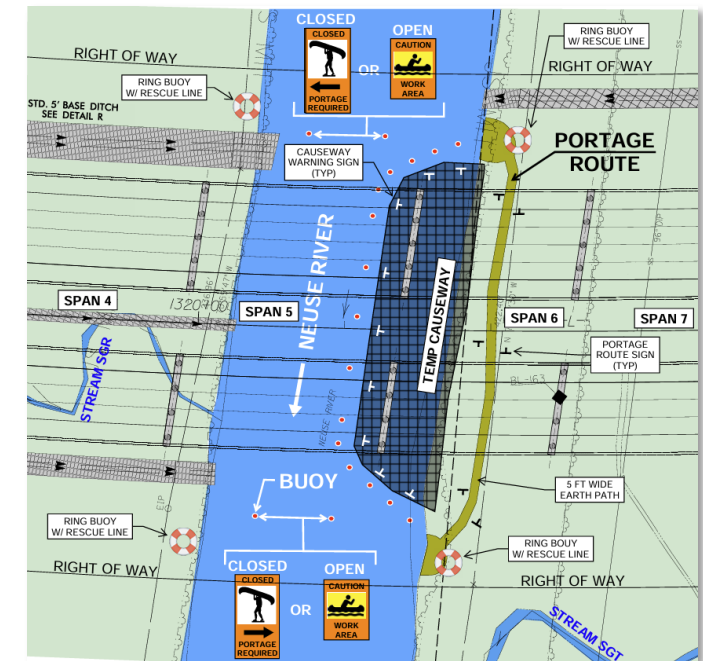
Neuse River Safety Precautions



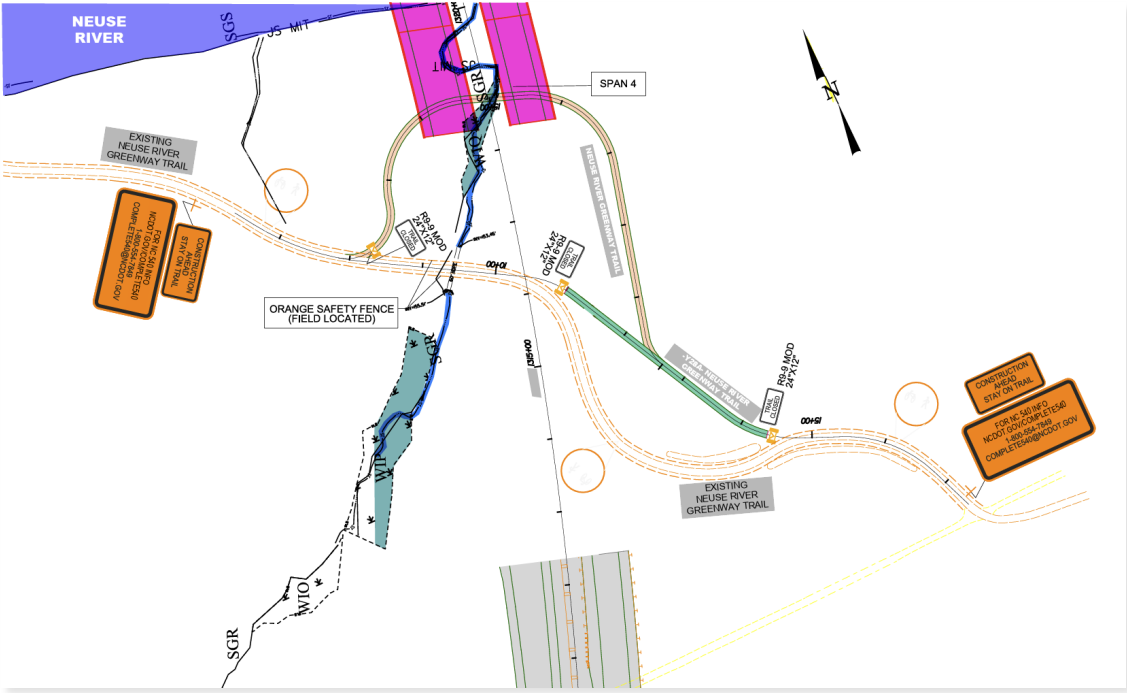
Advanced Warning Signage



Ring Buoys



River Safety Plan



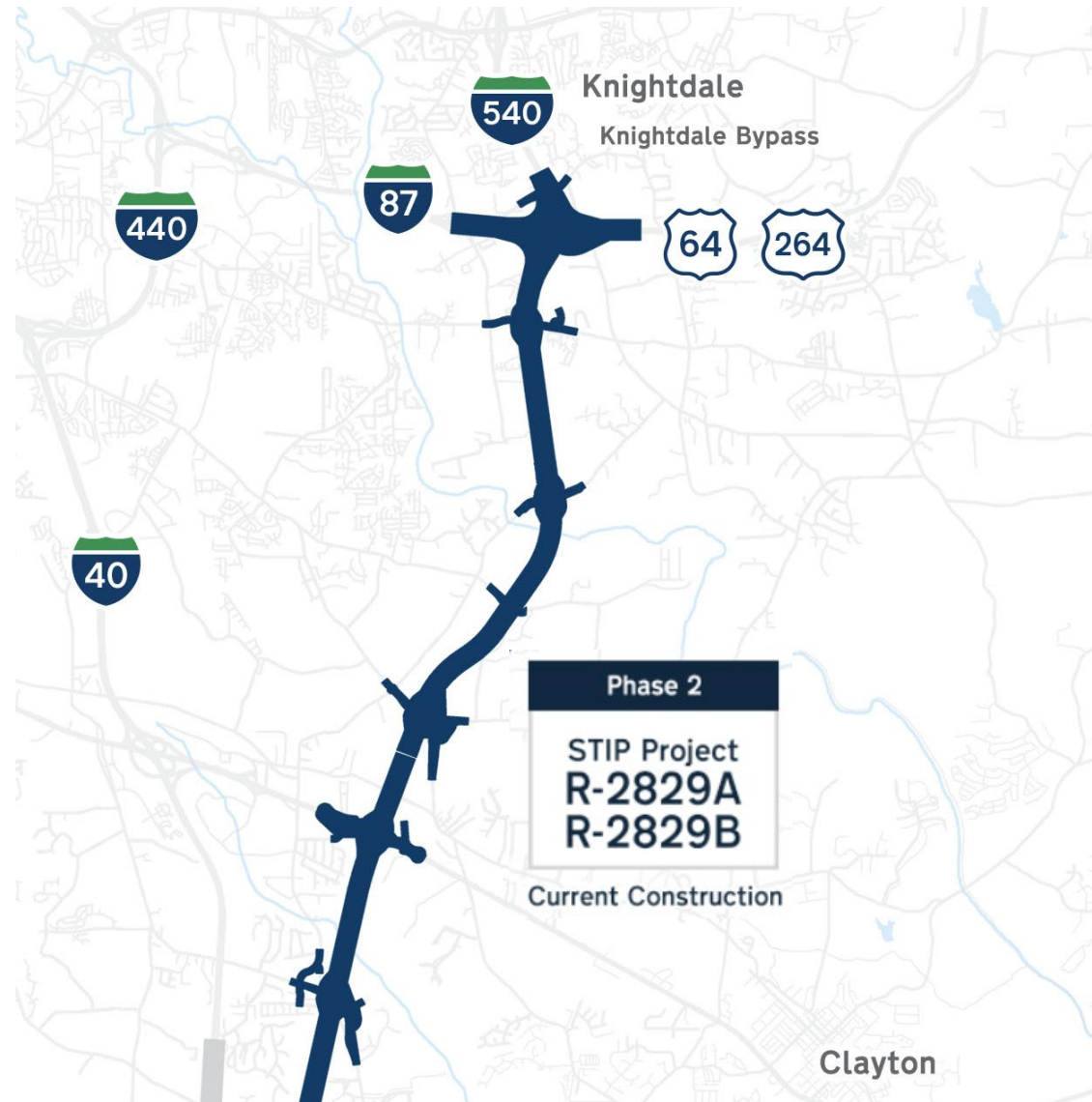
Trail Safety Plan



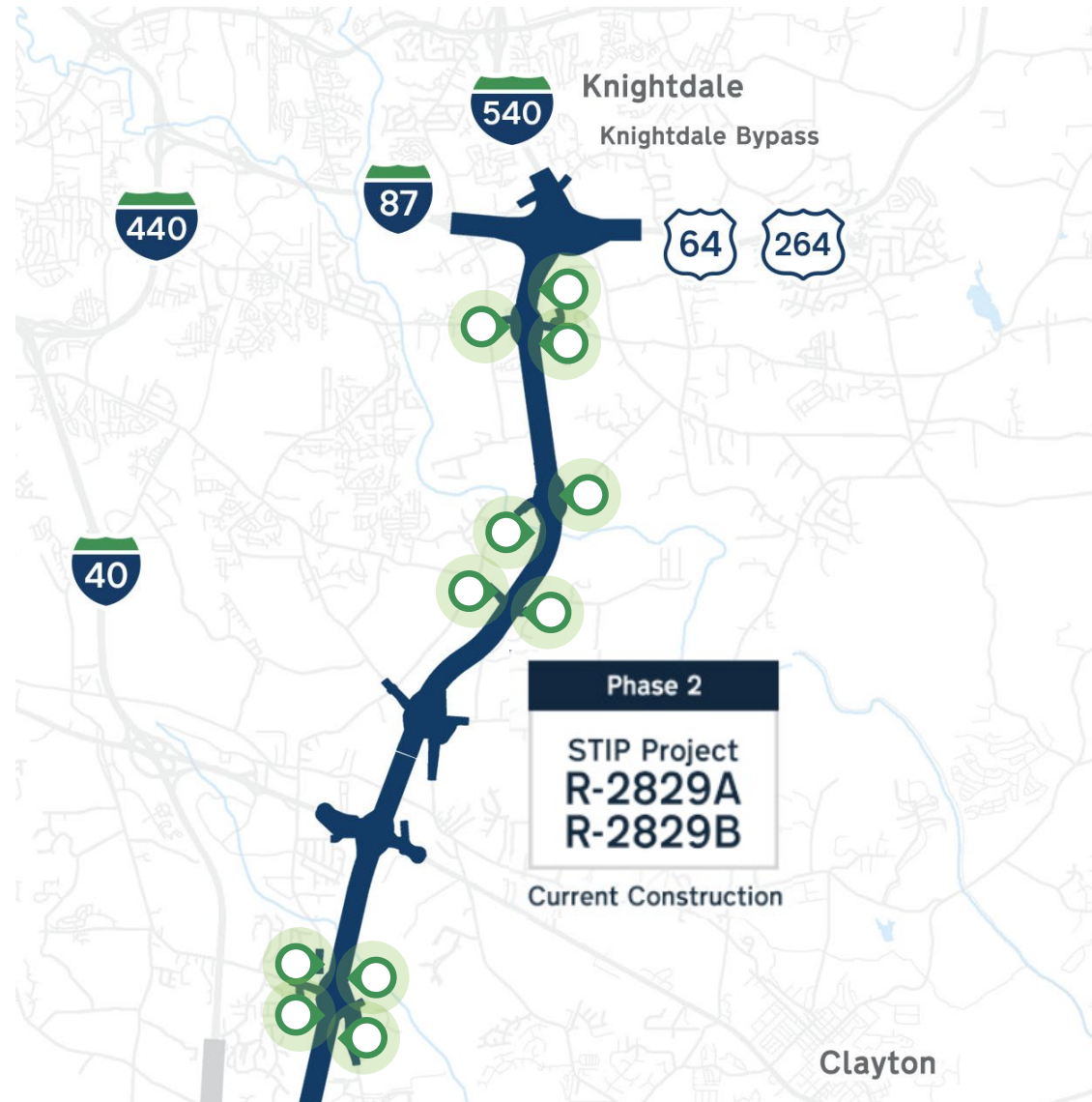
Orange Safety Fencing

Bike, Pedestrian and Multi-Use Accommodations

Bike/Pedestrian/Multi-Use Accommodations – Phase 2



Bike/Pedestrian/Multi-Use Accommodations – Phase 2



Bike/Multi -Use Accommodations



- Shared Bike Lanes
 - White Oak Road
 - Rock Quarry Road
 - Auburn Knightdale Road
 - Poole Road
- Multi -Use Paths
 - White Oak Road
 - White Oak Creek Greenway
 - Rock Quarry Road
 - Neuse River Greenway Trail
 - Poole Road
- Ready for Future Improvements
 - U.S. 70 Business
 - East Garner Road
 - Battle Bridge Road
 - Additional Neuse River Trail
 - Auburn Knightdale Road

Pedestrian Accommodations

Sidewalks



- Part of Phase 2
 - White Oak Road
 - Poole Road
- Ready for Future Improvements
 - U.S. 70 Business
 - East Garner Road
 - Rock Quarry Road
 - Battle Bridge Road
 - Auburn Knightdale Road

Phase 2 Outreach Efforts

Continuation



Mirroring successful strategies
from Phase 1

Neighborhood Meetings



Kick off at East Garner Road

Communications Plan



Comprehensive
communications and
public engagement plan

Early Communications



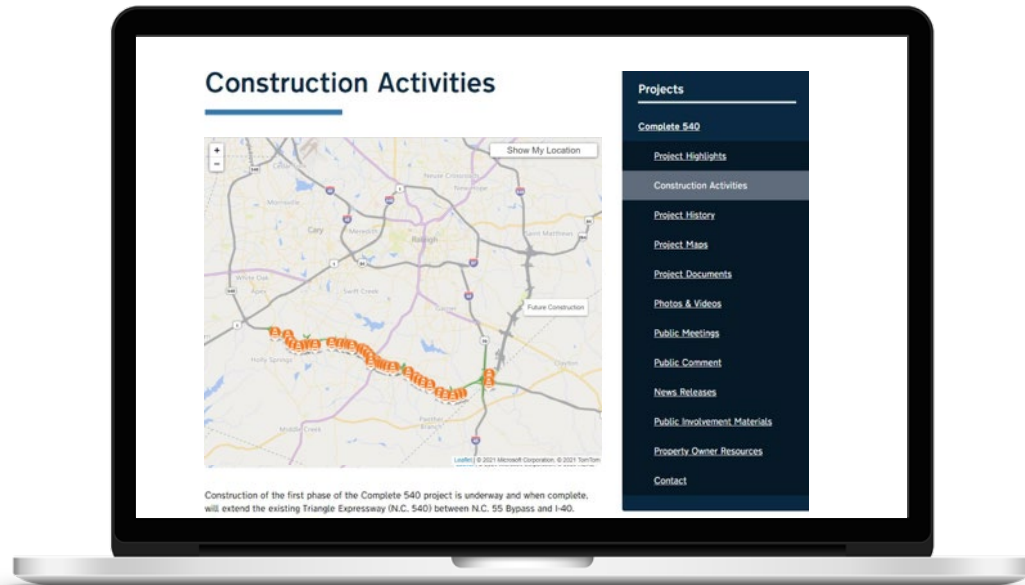
Initiated communications in early 2025
i.e., neighborhood meeting and letters to residents

Proactive Outreach

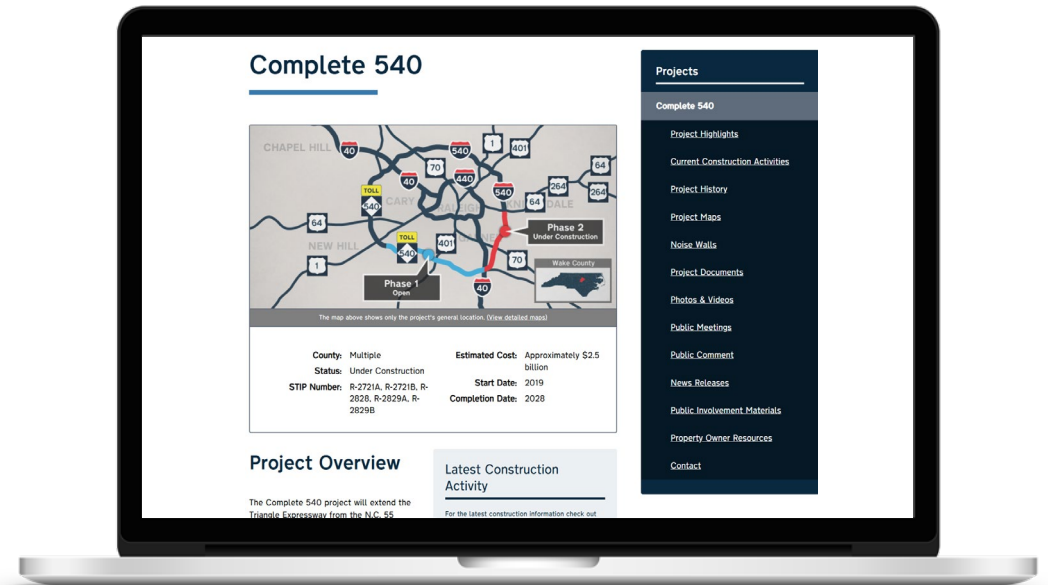


Initiating contact with
organizations to present

Resources at ncdot.gov/complete540



Interactive Map for
Construction Activities



Complete 540 Webpage

If you have any questions, please contact us at complete540@ncdot.gov or 1-800-554-7849

Para servicios de interpretación, llame al 1 -800 -481 -6494.

Before You Go!

Visit our NC Quick Pass table to:

- ✓ Learn about the benefits of using a NC Quick Pass
- 📄 Sign up for an NC Quick Pass account to start saving 50% on tolls in NC
- 💻 Manage your existing NC Quick Pass account
- ! Get answers to your questions about tolling



Contact Us



[ncdot.gov /complete540](https://ncdot.gov/complete540)



complete540@ncdot.gov



1-800 -554 -7849



Para servicios de interpretación,
llame al 1 -800 -481-6494.



[@NCTurnpike](https://twitter.com/NCTurnpike)

[@NC_QuickPass](https://twitter.com/NC_QuickPass)



Questions?



Thank you!