

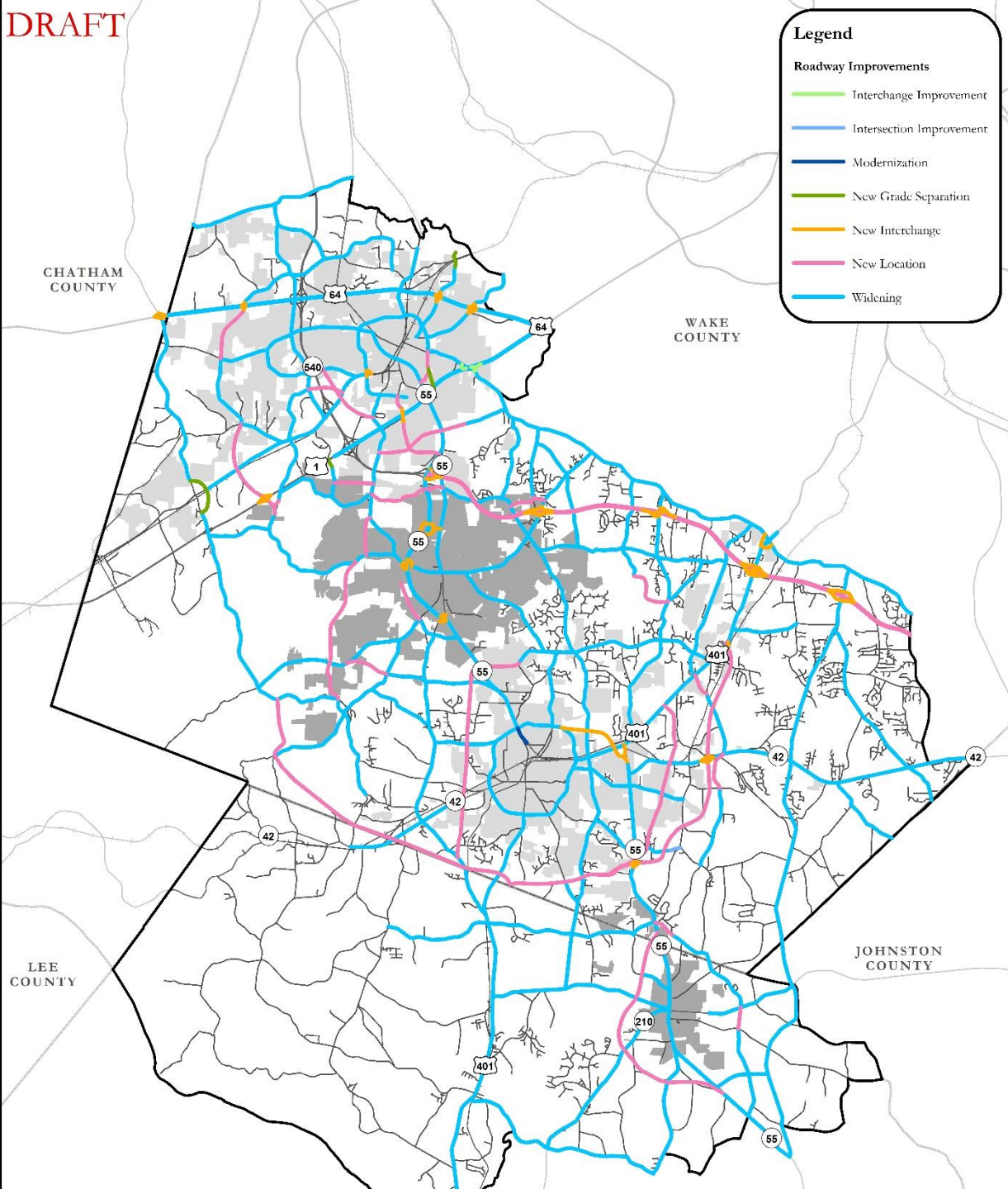


Southwest Area Study

PRESENTATION TO CAMPO EXECUTIVE BOARD

JUNE 19, 2019

DRAFT

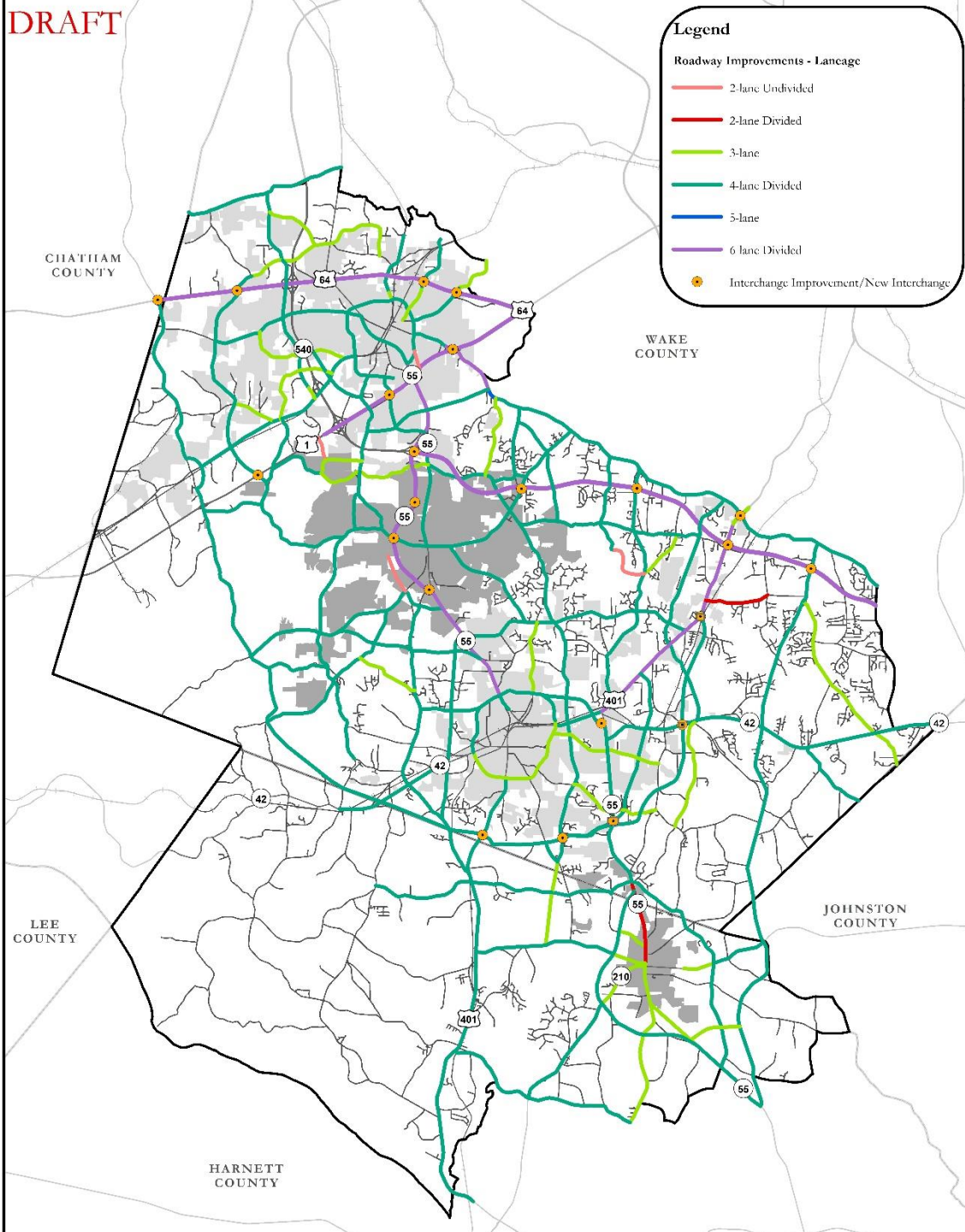


ROADS

RECOMMENDATIONS

Type of Improvement

DRAFT

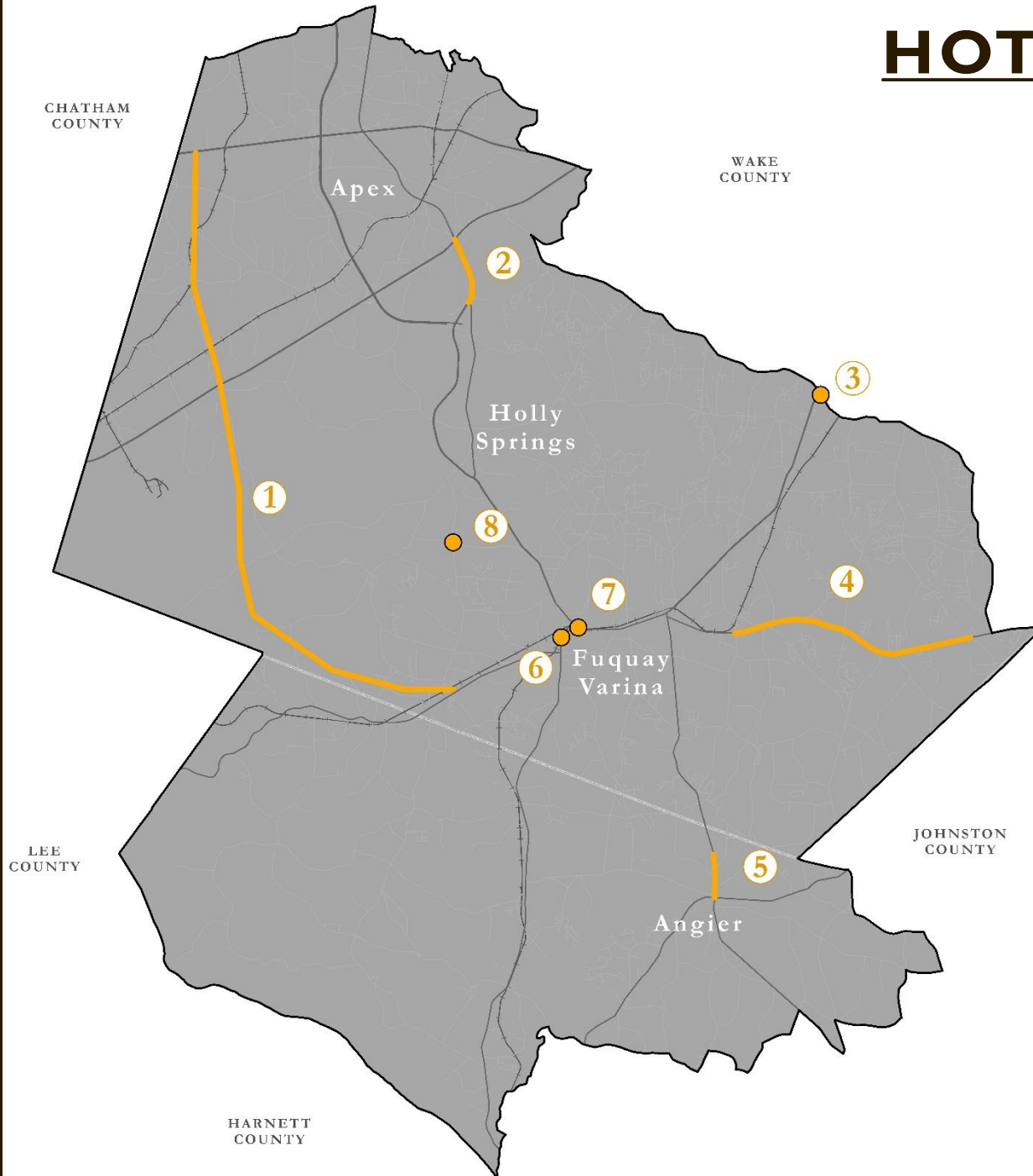


ROADS

RECOMMENDATIONS

Laneage

HOT SPOTS



• RECOMMENDATIONS

1. Future NC 75I

2. NC 55 – Apex

3. US 40I at Ten-Ten Road

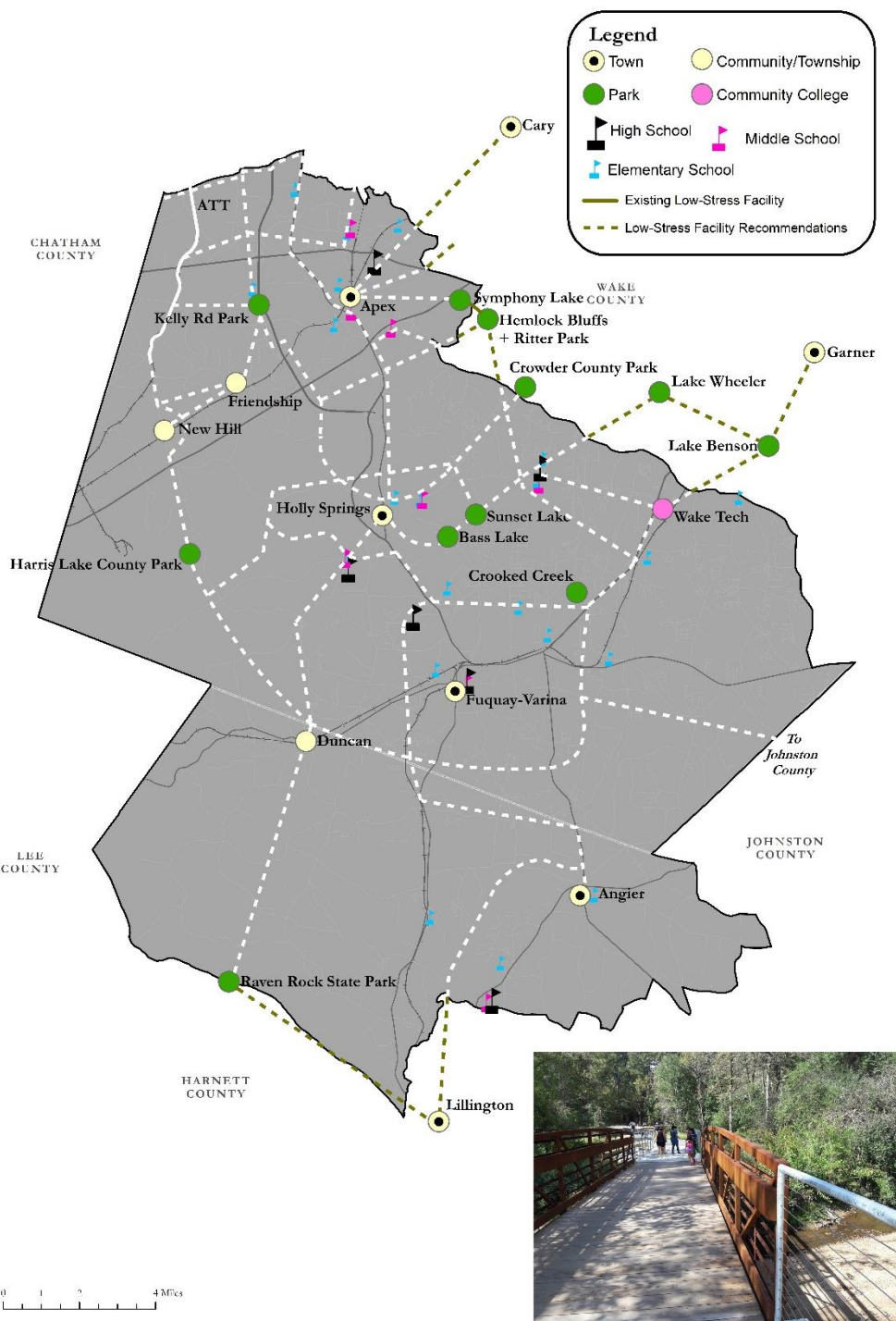
4. NC 42

5. NC 55 – Angier

6. NC 42/Main Street at
Wake Chapel Road

7. Broad Street at Ennis
Street

8. Piney Grove Wilbon
Road at Wade Nash Road



Active Modes

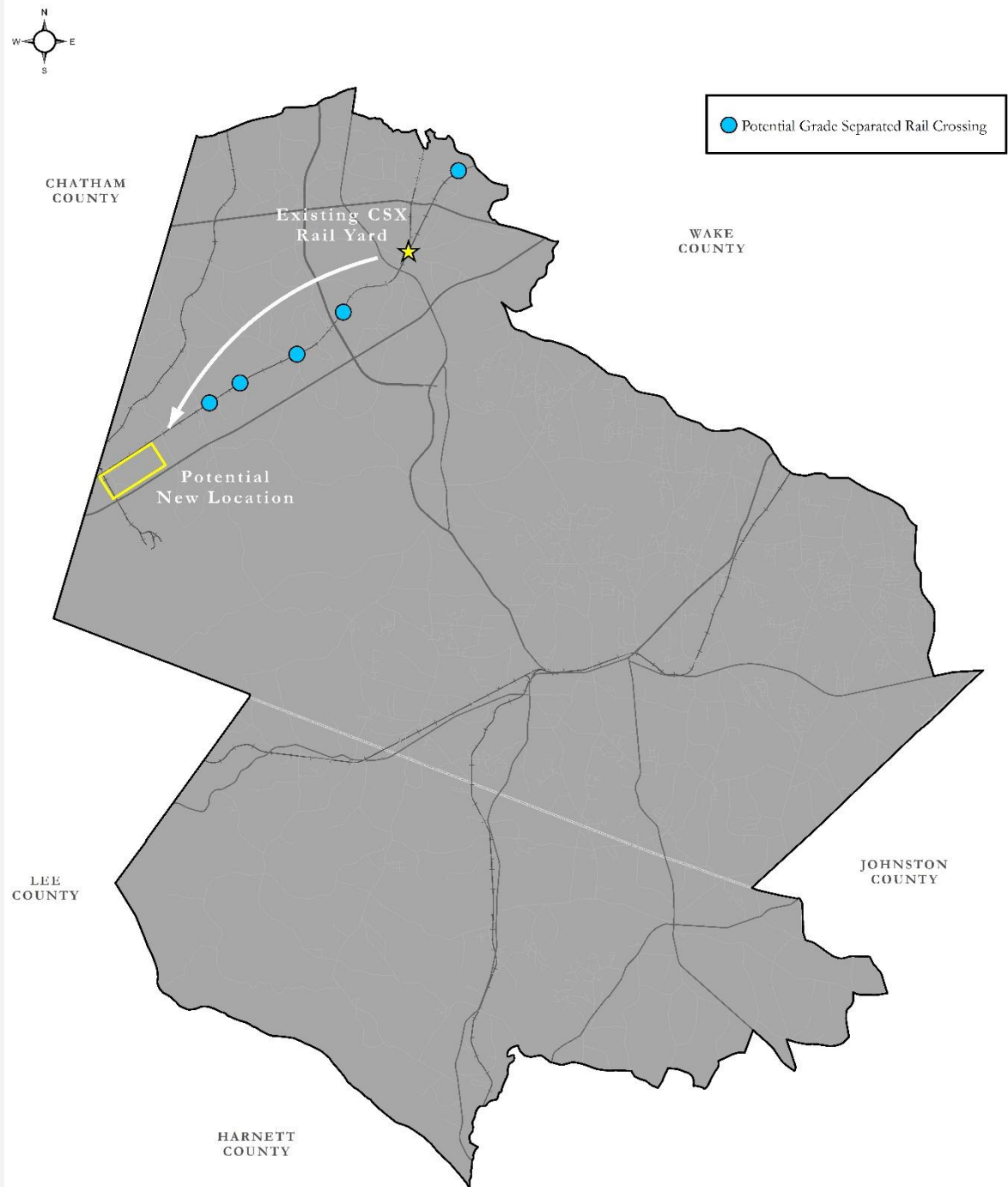
RECOMMENDATIONS

LOW STRESS NETWORK






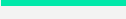
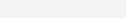
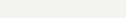
CSX-Apex Yard

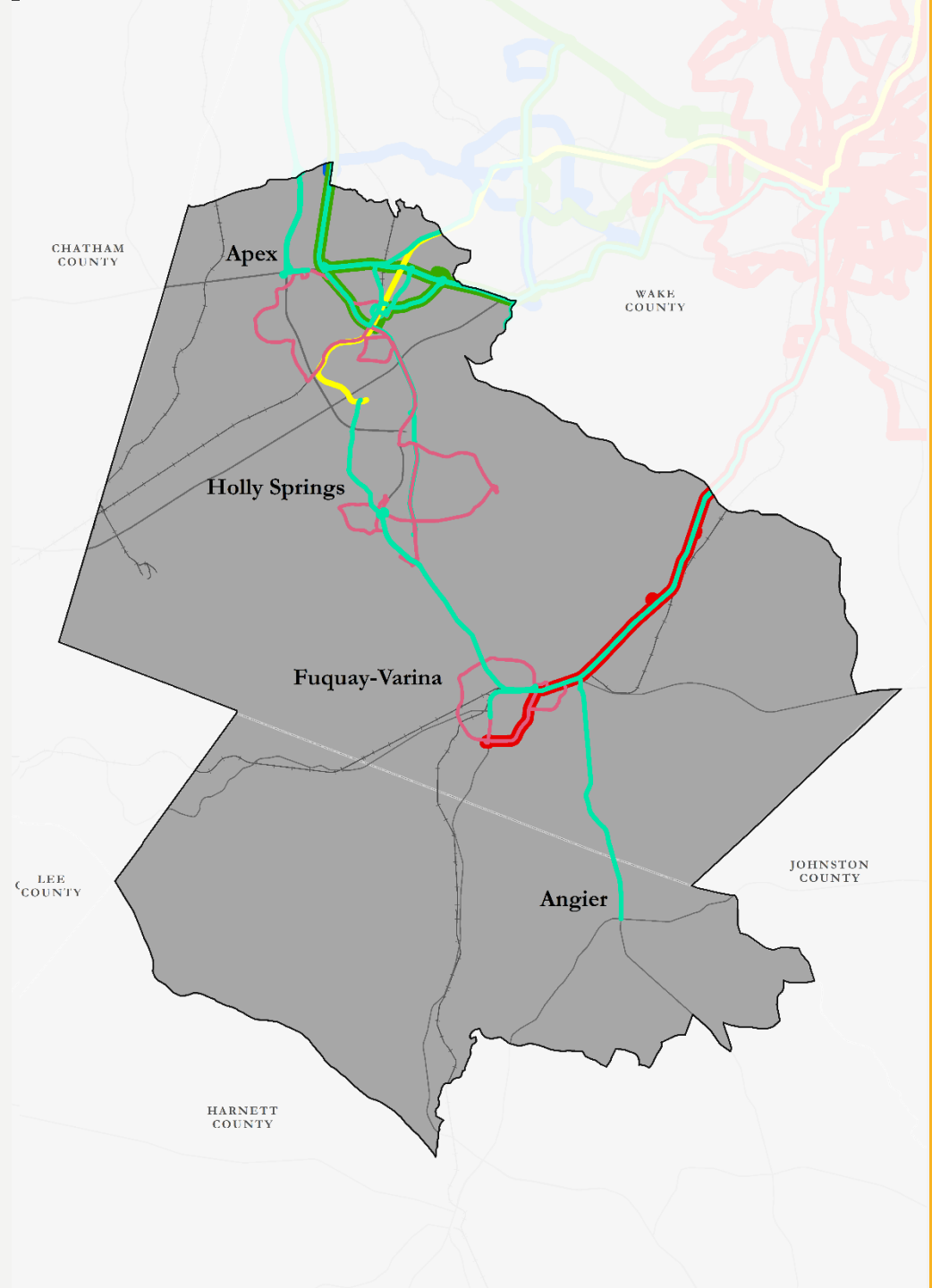
Potential Relocation



Transit Service

- RECOMMENDATIONS

-  GoRaleigh - Existing
-  GoTriangle - Existing
-  GoCary - Existing
-  Bus proposed
-  Circulator
-  Commuter Rail - Planned



www.swastudy.com